

STA-LOK[®]

**RIGGING
HARDWARE
SOLUTIONS
for
WIRE AND
ROD SYSTEMS**





YSC QA108

THE STA-LOK STORY

The new Sta-Lok range bears clear traces of our marine heritage.

When we started manufacturing Sta-Lok rigging hardware in 1973 we had one simple aim – to provide a high quality rigging solution. Better by design and performance.

Today Sta-Lok Terminals are one of the world's leading manufacturers of high quality rigging hardware, for marine and non-marine applications.



STA-LOK QUALITY

Central to the Sta-Lok philosophy is the company's commitment to an unprecedented level of manufacturing excellence. This remains as rigid today as it was a quarter of a century ago when the Sta-Lok Terminal received the Lloyds Register of Shipping approval.

Only the highest certified specification stainless steels and bronzes are used in our manufacturing facility, based in Essex, England.



STA-LOK SWAGE TERMINALS

STA-LOK ADJUSTERS

STA-LOK TERMINALS

STA-LOK STAINLESS STEEL TURNBUCKLES

STA-LOK BRONZE TURNBUCKLES

STA-LOK ROD SYSTEMS

*Right
Cribbs Causeway, Bristol*

*Left
Broadmead Gateway, Bristol*

... IN ARCHITECTURE
AND CONSTRUCTION



DESIGN

What could be more challenging than design – shaping tomorrow’s designs from established traditions and creating the future.

Rigging solutions for imaginative and creative design in shopping centres and modern offices, balustrading and bridges, bus stations and airports are all typical examples of the many and diverse projects utilising **Sta-Lok’s** proven products.



*Right
Stoy Haywood, London*

TALK TO STA-LOK
Because each project has specific requirements, Sta-Lok products can be designed and tailored to suit most applications. If you have a rigging problem to solve, talk to Sta-Lok about the solution.



METRIC THREADS SHOWN-UNF THREADS AVAILABLE

Specific examples include:
Fabric canopy support and tensioning systems
Roof tie rod systems
Glass wall support ties
Bridge suspensions
Fence bracing
Mast rigging
Balustrading
Staircase membranes
Modern sculpture

To help you select the products or services which best suit your requirements, our technical specialists are always happy to provide innovative input and assistance.

This catalogue is designed to provide both existing and potential users of Sta-Lok rigging hardware with the latest information on the range of products and services available and some examples of their application.

WIRE ROPES

Sta-Lok are able to provide a range of stainless steel wire ropes to suit all applications. Manufactured from high quality 316 stainless steel grade 1.4401. Wire ropes can be supplied coiled on reels or as made up assemblies to meet customer requirements.

Dimensions and breaking loads conform to BS MA 29.

Wire ropes available:

1 x 19 construction used for general applications.

Dyform compacted strand provides high strength and low stretch.

7 x 7 construction provides flexibility and is the stronger of the flexible wire ropes.

7 x 19 construction is the most flexible of the multi-strand wire ropes.

STA-LOK ROD SYSTEMS

Sta-Lok rod systems offer the ultimate in rigging design.

In application the **Sta-Lok** rod system is highly effective for architectural rigging, providing a high quality, low maintenance alternative to wire rigging systems.

Manufactured from the highest specification materials. **Sta-Lok** offer a comprehensive range of stainless steel rods and fittings.

For standard applications 316 stainless steels grade 1.4401 are used.

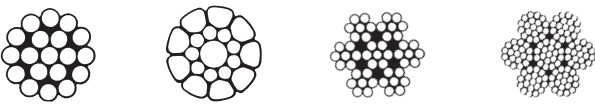

For high load bearing applications, high tensile stainless steel alloys are used to meet customer specifications.

The **Sta-Lok** system can be tailored to suit strength and dimensional requirements on almost any project.

Two finish specifications, satin and polished are available as standard.

To determine your best rigging solution talk to **Sta-Lok**.

See page 51 for further details.

| Wire Construction 1 x 19 | | Wire Construction DYFORM | | Wire Construction 7 x 7 | | Wire Construction 7 x 19 | |
|--------------------------|-------------|--------------------------|-------------|-------------------------|-------------|--------------------------|-------------|
| Diameter mm | Min Load KN | Diameter mm | Min Load KN | Diameter mm | Min Load KN | Diameter mm | Min Load KN |
| 2 | 3.13 | | | 2 | 2.37 | 2 | 2.21 |
| 3 | 7.06 | 3 | 9.81 | 3 | 5.34 | 3 | 5.00 |
| 4 | 12.55 | 4 | 17.46 | 4 | 9.49 | 4 | 8.89 |
| 5 | 19.61 | 5 | 23.93 | 5 | 14.81 | 5 | 13.92 |
| 6 | 28.24 | 6 | 34.81 | 6 | 21.38 | 6 | 20.00 |
| 7 | 34.81 | 7 | 48.15 | 7 | 29.13 | 7 | 27.26 |
| 8 | 45.50 | 8 | 60.31 | 8 | 37.95 | 8 | 35.60 |
| 10 | 71.10 | 10 | 95.81 | 10 | 59.33 | 10 | 55.60 |
| 12 | 101.99 | 12 | 141.22 | 12 | 85.42 | 12 | 80.02 |
| 14 | 139.06 | 14 | 189.28 | | | 14 | 108.86 |
| 16 | 182.02 | 16 | 251.06 | | | 16 | 133.37 |
| 19 | 212.03 | 19 | 313.82 | | | | |
| 22 | 285.08 | | | | | | |
| 26 | 398.16 | | | | | | |

Figures based on Manufacturers Min Breaking Load KN

| Standard Capacity Rod | | | | | | | |
|-----------------------|-------------------|------------------|----------------------|--------------|------------|------------------|----------------------|
| Metric | | | | Imperial | | | |
| Bar Dia mm | Thread ISO Metric | Breaking Load KN | Proof Stress 0.2% KN | Bar Dia inch | Thread UNF | Breaking Load KN | Proof Stress 0.2% KN |
| 6.4 | M6 | 11.8 | 6.2 | 1/4 | 1/4 | 14.3 | 7.5 |
| 8 | M8 | 21.8 | 11.5 | 5/16 | 5/16 | 22.9 | 12.1 |
| 10 | M10 | 34.7 | 18.3 | 3/8 | 3/8 | 35.3 | 18.6 |
| 12.7 | M12 | 50.6 | 26.7 | 7/16 | 7/16 | 47.6 | 25.1 |
| 16 | M16 | 95.7 | 50.4 | 1/2 | 1/2 | 64.8 | 34.1 |
| 20 | M20 | 135.0 | 78.8 | 5/8 | 5/8 | 104.3 | 54.9 |
| 22.2 | M22 | 168.9 | 98.5 | 3/4 | 3/4 | 137.8 | 80.4 |
| 25.4 | M24 | 194.5 | 113.5 | 7/8 | 7/8 | 188.4 | 109.9 |
| 28.7 | M27 | 256.2 | 149.4 | 1 | 1 | 245.0 | 142.9 |

Minimum breaking loads for 316 stainless steel rods are based on the core diameter of the thread. Stainless steel rods are available up to 3 metres in length. For spans greater than 3 metres, a rod connector, reference RC is required.



SWAGE TERMINALS

1

Swage Terminal

Suitable for use with all types of swaging machines, **Sta-Lok's** swage terminals are available in a wide range of styles to suit most applications. Manufactured from 316 stainless steel grade 1.4401. All swage terminals are machined to close tolerances, to ensure accurate termination.

Swage Stud

Manufactured with rolled threads up to M16 inclusive. Larger threads are machined with cut threads. Quality - 100% inspection of threads ensures maximum thread strength and accurate assembly. For wire sizes 3-26mm.

Swage Fork

Reference 035. A high quality specification swage fork, manufactured from solid stainless steel bar. Supplied with a highly polished finish. Available in sizes 3-26mm.

Reference G035 are manufactured as a two piece weld free assembly. For wire sizes 4-5mm.

Swage Eye

Sizes 3-10mm inclusive are the forged style. Sizes 12-26mm are machined from solid stainless steel bar. Supplied with a highly polished finish.

Toggle Swage

Designed to provide full articulation in two planes, reducing fatigue and wire failure in non-rigid applications. For wire sizes 3-14mm.

Ball Swage

Designed with stylish lines to provide elegant and practical features, where angular alignment or self-adjustment is required.

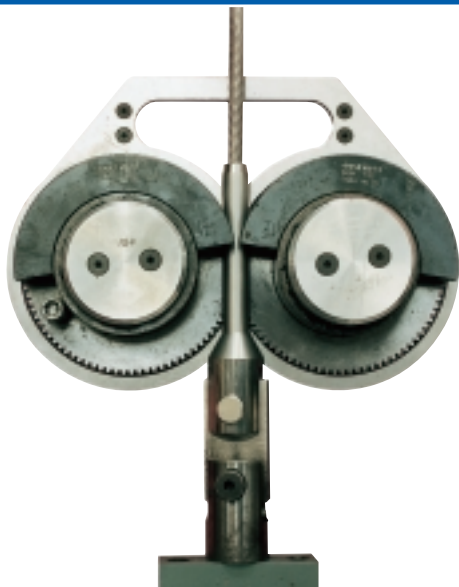
For wire sizes 3-8mm.

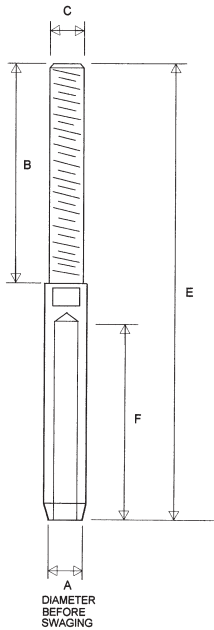
Dome Head Swage

Ideal for balustrading applications. The dome head form ensures a secure, snag free end.

For wire sizes 3-8mm.

- SWAGE STUD
- SHORT SWAGE STUD
- SWAGE EYE
- SWAGE FORK
- STRAP TOGGLE SWAGE
- BALL SWAGE
- DOME HEAD SWAGE





SWAGE STUD

Reference 061-M L = Left Hand Thread
Reference 061-M R = Right Hand Thread

| Cat Ref | Wire Ø mm | A | B | E | F | Metric C |
|------------------|-----------|------|-----|-----|-----|----------|
| 061-03-M6 L/R | 3 | 6.2 | 53 | 108 | 39 | M6 |
| 061-04-M6 L/R | 4 | 7.4 | 53 | 120 | 45 | M6 |
| 061-04-M8 L/R * | 4 | 7.4 | 54 | 120 | 45 | M8 |
| 061-05-M8 L/R | 5 | 9.0 | 54 | 121 | 45 | M8 |
| 061-05-M10 L/R * | 5 | 9.0 | 67 | 133 | 51 | M10 |
| 061-06-M10 L/R | 6 | 12.4 | 67 | 154 | 61 | M10 |
| 061-06-M12 L/R * | 6 | 12.4 | 83 | 168 | 61 | M12 |
| 061-07-M12 L/R | 7 | 14.2 | 97 | 182 | 70 | M12 |
| 061-08-M12 L/R | 8 | 16.1 | 97 | 203 | 80 | M12 |
| 061-08-M16 L/R * | 8 | 16.1 | 111 | 220 | 80 | M16 |
| 061-10-M16 L/R | 10 | 17.7 | 111 | 239 | 100 | M16 |
| 061-10-M20 L/R * | 10 | 17.7 | 129 | 257 | 100 | M20 |
| 061-12-M20 L/R | 12 | 21.4 | 129 | 275 | 120 | M20 |
| 061-12-M22 L/R * | 12 | 21.4 | 146 | 298 | 120 | M22 |
| 061-14-M22 L/R | 14 | 25.0 | 146 | 314 | 140 | M22 |
| 061-14-M24 L/R * | 14 | 25.0 | 163 | 331 | 140 | M24 |
| 061-16-M24 L/R | 16 | 28.2 | 163 | 365 | 160 | M24 |
| 061-16-M27 L/R * | 16 | 28.2 | 165 | 367 | 160 | M27 |
| 061-19-M27 L/R | 19 | 34.5 | 165 | 400 | 190 | M27 |
| 061-19-M30 L/R * | 19 | 34.5 | 228 | 463 | 190 | M30 |
| 061-22-M30 L/R | 22 | 40.3 | 228 | 520 | 242 | M30 |
| 061-26-M36 L/R | 26 | 45.8 | 232 | 572 | 290 | M36 |

* Recommended for use with Compacted Strand Wire

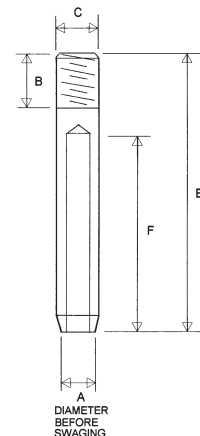


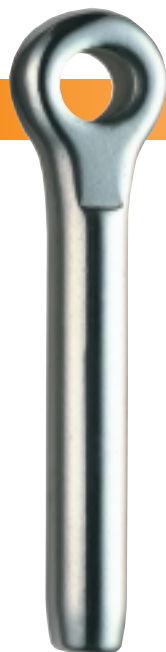
SHORT SWAGE STUD

Reference 051-M-SH

| Cat Ref | Wire Ø mm | A | B | E | F | Metric C |
|--------------|-----------|------|------|----|----|----------|
| 051-04-M8-SH | 4 | 7.4 | 11.1 | 64 | 45 | M8 |
| 051-05-M8-SH | 5 | 9.0 | 11.1 | 71 | 51 | M8 |
| 051-06-M8-SH | 6 | 12.4 | 11.1 | 86 | 61 | M8 |

Right Hand Thread



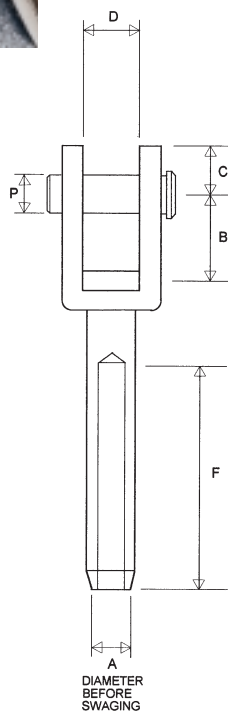
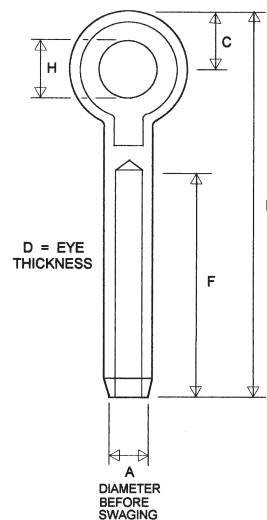


SWAGE EYE

Reference 039

| Cat Ref | Wire Ø mm | A | C | D | E | F | H |
|---------|-----------|------|------|------|-----|-----|------|
| 039-03 | 3 | 6.2 | 6.4 | 6.0 | 60 | 39 | 6.4 |
| 039-04 | 4 | 7.4 | 8.0 | 7.0 | 72 | 45 | 8.1 |
| 039-05 | 5 | 9.0 | 9.5 | 8.0 | 84 | 52 | 9.6 |
| 039-06 | 6 | 12.4 | 11.1 | 9.5 | 102 | 64 | 11.2 |
| 039-07 | 7 | 14.2 | 12.7 | 11.0 | 113 | 70 | 12.8 |
| 039-08 | 8 | 16.1 | 12.7 | 11.7 | 128 | 80 | 14.5 |
| 039-10 | 10 | 17.7 | 15.9 | 15.0 | 155 | 100 | 16.1 |
| 039-12* | 12 | 21.4 | 22.5 | 19.0 | 189 | 120 | 19.5 |
| 039-14* | 14 | 25.0 | 25.5 | 20.0 | 216 | 140 | 22.5 |
| 039-16* | 16 | 28.2 | 31.7 | 24.0 | 250 | 160 | 25.4 |
| 039-19* | 19 | 34.5 | 36.5 | 28.0 | 296 | 190 | 28.6 |
| 039-22* | 22 | 40.3 | 39.7 | 30.3 | 404 | 242 | 32.0 |
| 039-26* | 26 | 45.8 | 42.9 | 33.3 | 462 | 290 | 35.0 |

Sizes 3-10 mm are Forged style
* Sizes 12-26 mm are Machined style

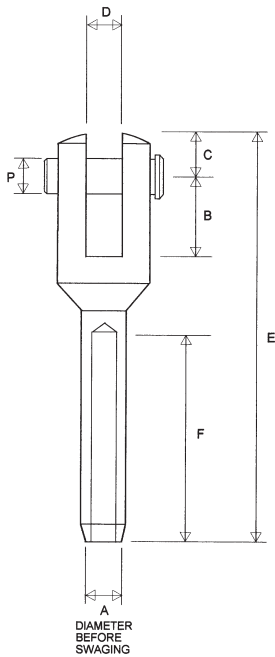


SWAGE FORK

Reference G035

| Cat Ref | Wire Ø mm | A | B | C | D | F | P |
|---------|-----------|-----|------|-----|------|----|-----|
| G035-04 | 4 | 7.4 | 14.7 | 8.8 | 11.1 | 45 | 8.0 |
| G035-05 | 5 | 9.0 | 14.7 | 8.8 | 11.1 | 51 | 8.0 |





SWAGE FORK

Reference 035

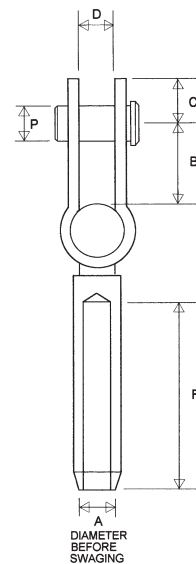
| Cat Ref | Wire Ø mm | A | B | C | D | E | F | P |
|---------|-----------|------|------|------|------|-----|-----|------|
| 035-03 | 3 | 6.2 | 10 | 7.8 | 6.3 | 70 | 39 | 6.0 |
| 035-04 | 4 | 7.4 | 14.7 | 10.3 | 8.0 | 86 | 45 | 8.0 |
| 035-05 | 5 | 9.0 | 17.5 | 11.9 | 9.5 | 100 | 51 | 9.4 |
| 035-06 | 6 | 12.4 | 22.2 | 15.8 | 11.1 | 123 | 61 | 10.9 |
| 035-07 | 7 | 14.2 | 25.1 | 16.0 | 11.1 | 131 | 70 | 10.9 |
| 035-08 | 8 | 16.1 | 27.4 | 19.2 | 13.7 | 152 | 80 | 12.7 |
| 035-10 | 10 | 17.7 | 29.4 | 22.6 | 16.0 | 183 | 100 | 15.6 |
| 035-12 | 12 | 21.4 | 33.3 | 25.5 | 19.0 | 219 | 120 | 18.5 |
| 035-14 | 14 | 25.0 | 38.1 | 31.5 | 22.2 | 249 | 140 | 21.5 |
| 035-16 | 16 | 28.2 | 40.0 | 33.6 | 25.4 | 275 | 160 | 25.0 |
| 035-19 | 19 | 34.5 | 50.0 | 40.8 | 28.6 | 366 | 190 | 28.2 |
| 035-22 | 22 | 40.3 | 60.3 | 44.4 | 31.8 | 417 | 242 | 31.6 |
| 035-26 | 26 | 45.8 | 69.8 | 57.1 | 34.9 | 484 | 290 | 34.6 |



STRAP TOGGLE SWAGE

Reference 038

| Cat Ref | Wire Ø mm | A | B | C | D | F | P |
|---------|-----------|------|----|-----|------|-----|------|
| 038-03 | 3 | 6.2 | 15 | 9.0 | 6.4 | 39 | 6.2 |
| 038-04 | 4 | 7.4 | 19 | 10 | 8.4 | 45 | 7.9 |
| 038-05 | 5 | 9.0 | 21 | 11 | 10.0 | 51 | 9.4 |
| 038-06 | 6 | 12.4 | 25 | 15 | 11.5 | 61 | 10.9 |
| 038-07 | 7 | 14.2 | 28 | 16 | 13.2 | 70 | 12.7 |
| 038-08 | 8 | 16.1 | 28 | 16 | 13.2 | 80 | 12.7 |
| 038-10 | 10 | 17.7 | 33 | 20 | 16.3 | 100 | 15.6 |
| 038-12 | 12 | 21.4 | 34 | 25 | 19.4 | 120 | 18.5 |
| 038-14 | 14 | 25.0 | 40 | 32 | 22.4 | 140 | 21.5 |





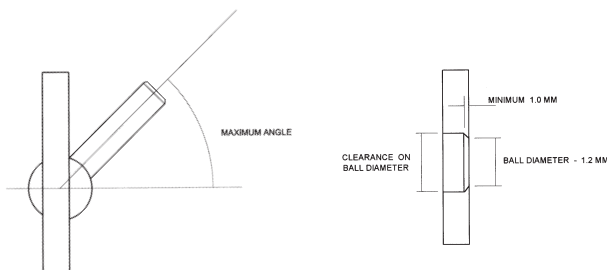
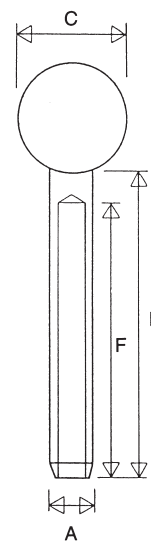
BALL SWAGE

Reference 040

| Cat Ref | Wire Ø mm | A | B | C | F |
|---------|-----------|------|-----|----|----|
| 040-03 | 3 | 6.2 | 53 | 19 | 39 |
| 040-04 | 4 | 7.4 | 67 | 22 | 45 |
| 040-05 | 5 | 9.0 | 67 | 22 | 51 |
| 040-06 | 6 | 12.4 | 86 | 24 | 61 |
| 040-07 | 7 | 14.2 | 91 | 28 | 70 |
| 040-08 | 8 | 16.1 | 106 | 28 | 80 |

Great accuracy is required when drilling holes for Ball Swages

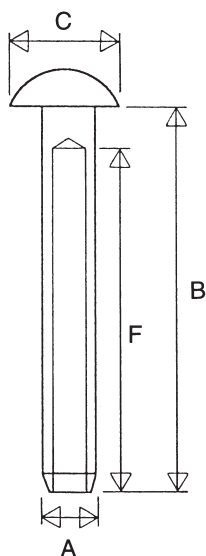
| Ref | Max Angle | Ref | Max Angle |
|--------|-----------|--------|-----------|
| 040-03 | 45 | 040-06 | 45 |
| 040-04 | 45 | 040-07 | 35 |
| 040-05 | 45 | 040-08 | 35 |



DOME HEAD SWAGE

Reference 041

| Cat Ref | Wire Ø mm | A | B | C | F |
|---------|-----------|------|-----|----|----|
| 041-03 | 3 | 6.2 | 53 | 15 | 39 |
| 041-04 | 4 | 7.4 | 67 | 18 | 45 |
| 041-05 | 5 | 9.0 | 67 | 18 | 51 |
| 041-06 | 6 | 12.4 | 86 | 20 | 61 |
| 041-07 | 7 | 14.2 | 91 | 24 | 70 |
| 041-08 | 8 | 16.1 | 106 | 24 | 80 |





STA-LOK ADJUSTERS

2

New styling from Sta-Lok re-defines the art of tensioning wire and rod.

New concept provides elegant lines for balustrading.

Sta-Lok have designed a range of adjusters to provide practical tensioning of wire and rod systems with style and elegance. **Sta-Lok** adjusters are manufactured from high quality 316 stainless steel grade 1.4401.

Adjustiball

Used to provide angular alignment or where self-alignment is required. Adjustment is achieved through a hexagonal drive. Ensuring clean lines and security. Can be used in conjunction with **Sta-Lok** studs or swage studs. For wire sizes 3mm – 8mm.

Dome Head Adjuster

Designed with stylish lines to provide practical tensioning of wire or rod systems. Adjustment is achieved through a hexagonal drive. Can be used in conjunction with **Sta-Lok** studs or swage studs. For wire sizes 3mm – 8mm.

Flat Head Adjuster

For tensioning wire and rod systems. Adjustment is achieved through a spanner drive. For wire sizes 3mm – 8mm.

Swage Tension Fork

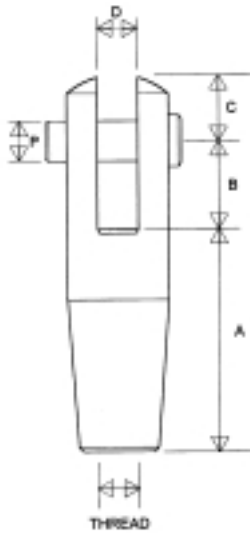
Ideal for use where symmetry is required. Available for wire sizes up to 19mm diameter. The tension fork can be used with either **Sta-Lok** studs or swage studs (see Rod Systems, page 51).

Post Spiggot

Designed for stair posts to provide angular and planar alignment. Use with **Sta-Lok** studs or swage studs. Thread sizes M6-M12.

- STA-LOK SWAGE TENSION FORK
- STA-LOK ADJUSTIBALL
- STA-LOK DOME HEAD ADJUSTER
- STA-LOK FLAT HEAD ADJUSTER
- STA-LOK POST SPIGGOT
- STA-LOK ANGLED POST SPIGGOT



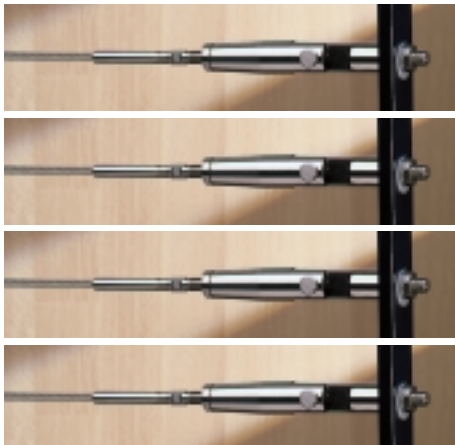


SWAGE TENSION FORK

Reference F361-M L = Left Hand Thread
Reference F361-M R = Right Hand Thread

| Cat Ref | Wire Ø mm | Metric Thread | A | B | C | D | P |
|-------------------|-----------|---------------|-------|------|------|------|------|
| F361-03-M6 L/R | 3 | M6 | 38.5 | 10.0 | 8.5 | 6.4 | 6.3 |
| F361-04-M6 L/R | 4 | M6 | 38.5 | 10.0 | 8.5 | 6.4 | 6.3 |
| F361-04-M8 L/R * | 4 | M8 | 52.7 | 14.7 | 10.3 | 8.0 | 7.9 |
| F361-05-M8 L/R | 5 | M8 | 52.7 | 14.7 | 10.3 | 8.0 | 7.9 |
| F361-05-M10 L/R * | 5 | M10 | 57.6 | 18.0 | 11.4 | 9.5 | 9.4 |
| F361-06-M10 L/R | 6 | M10 | 66.2 | 22.2 | 15.7 | 11.1 | 10.9 |
| F361-06-M12 L/R * | 6 | M12 | 66.2 | 22.2 | 15.7 | 11.1 | 10.9 |
| F361-08-M12 L/R | 8 | M12 | 68.4 | 27.4 | 19.0 | 12.7 | 12.7 |
| F361-08-M16 L/R * | 8 | M16 | 86.9 | 29.4 | 22.6 | 16.0 | 15.6 |
| F361-10-M16 L/R | 10 | M16 | 86.9 | 29.4 | 22.6 | 16.0 | 15.6 |
| F361-10-M20 L/R * | 10 | M20 | 107.0 | 33.3 | 25.5 | 19.1 | 18.5 |
| F361-12-M20 L/R | 12 | M20 | 107.0 | 33.3 | 25.5 | 19.1 | 18.5 |
| F361-12-M22 L/R * | 12 | M22 | 114.3 | 38.1 | 31.5 | 22.2 | 21.5 |
| F361-14-M22 L/R | 14 | M22 | 114.3 | 38.1 | 31.5 | 22.2 | 21.5 |
| F361-14-M24 L/R * | 14 | M24 | 129.7 | 40.0 | 35.4 | 25.4 | 25.0 |
| F361-16-M24 L/R | 16 | M24 | 129.7 | 40.0 | 35.4 | 25.4 | 25.0 |
| F361-16-M27 L/R * | 16 | M27 | 136.5 | 50.0 | 41.2 | 28.5 | 28.2 |
| F361-19-M27 L/R | 19 | M27 | 136.5 | 50.0 | 41.2 | 28.5 | 28.2 |

* Recommended for use with Compacted Strand Wire
Tension Fork complete with Swage Stud



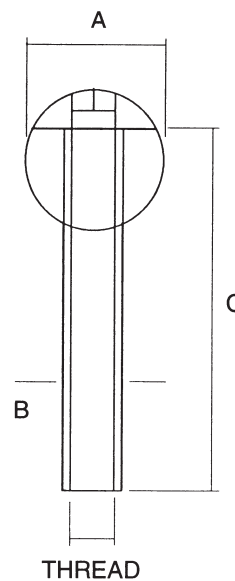


ADJUSTIBALL

Reference AB-M

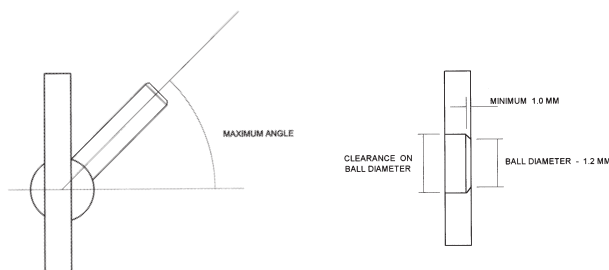
| Cat Ref | Wire Ø mm | Metric Thread | A | B | C |
|---------|-----------|---------------|----|------|----|
| AB-M6 | 3 - 4 | M6 | 19 | 8 | 45 |
| AB-M8 | 4 - 5 | M8 | 22 | 11.5 | 50 |
| AB-M10 | 5 - 6 | M10 | 24 | 13 | 60 |
| AB-M12 | 6 - 7 - 8 | M12 | 28 | 16 | 80 |

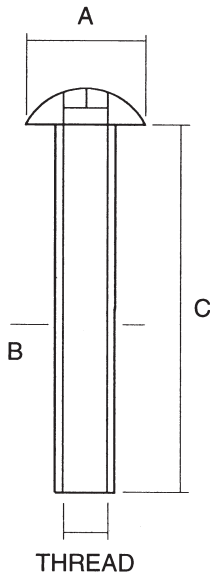
Right Hand Thread Only
Use With Swage Stud Terminal 061
Sta-Lok Stud Terminal 036



| Ref | Max Angle | Ref | Max Angle |
|-------|-----------|--------|-----------|
| AB-M6 | 45 | AB-M10 | 35 |
| AB-M8 | 45 | AB-M12 | 35 |

Great accuracy is required when drilling holes for Adjustiballs





DOME HEAD ADJUSTER

Reference DHA-M

| Cat Ref | Wire Ø mm | Metric Thread | A | B | C |
|---------|-----------|---------------|----|------|----|
| DHA-M6 | 3 – 4 | M6 | 16 | 8 | 45 |
| DHA-M8 | 4 – 5 | M8 | 20 | 11.5 | 50 |
| DHA-M10 | 5 – 6 | M10 | 22 | 13 | 60 |
| DHA-M12 | 6 – 7 – 8 | M12 | 25 | 16 | 80 |

Right Hand Thread Only
Use With Swage Stud Terminal 061
Sta-Lok Stud Terminal 036

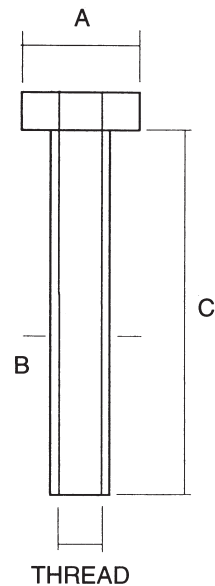


FLAT HEAD ADJUSTER

Reference FHA-M

| Cat Ref | Wire Ø mm | Metric Thread | A | B | C |
|---------|-----------|---------------|----|------|----|
| FHA-M6 | 3 – 4 | M6 | 15 | 8 | 45 |
| FHA-M8 | 4 – 5 | M8 | 18 | 11.5 | 50 |
| FHA-M10 | 5 – 6 | M10 | 20 | 13 | 60 |
| FHA-M12 | 6 – 7 – 8 | M12 | 24 | 16 | 80 |

Right Hand Thread Only
Use With Swage Stud Terminal 061
Sta-Lok Stud Terminal 036



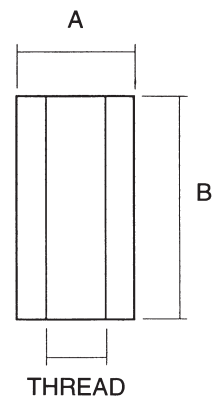


POST SPIGGOT

Reference PS-M L = Left Hand Thread
Reference PS-M R = Right Hand Thread

| Cat Ref | Wire Ø mm | Metric Thread | A | B |
|------------|-----------|---------------|----|----|
| PS-M6 L/R | 3 – 4 | M6 | 16 | 30 |
| PS-M8 L/R | 4 – 5 | M8 | 19 | 35 |
| PS-M10 L/R | 5 – 6 | M10 | 19 | 45 |
| PS-M12 L/R | 6 – 7 – 8 | M12 | 22 | 65 |

Use With Swage Stud Terminal 061
Sta-Lok Stud Terminal 036



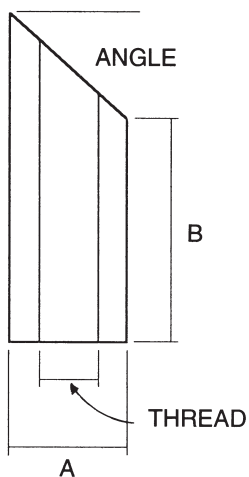
ANGLED POST SPIGGOT

Reference APS-M L = Left Hand Thread
Reference APS-M R = Right Hand Thread

| Cat Ref | Wire Ø mm | Metric Thread | A | B |
|-------------|-----------|---------------|----|----|
| APS-M6 L/R | 3 – 4 | M6 | 16 | 30 |
| APS-M8 L/R | 4 – 5 | M8 | 19 | 35 |
| APS-M10 L/R | 5 – 6 | M10 | 19 | 45 |
| APS-M12 L/R | 6 – 7 – 8 | M12 | 22 | 65 |

Angle machined to suit customers requirements

Use With Swage Stud Terminal 061
Sta-Lok Stud Terminal 036





STA-LOK TERMINALS

3

Sta-Lok Terminals are a range of high quality high performance wire rope fittings for 1x19, 7x7, 7x19 and Dyform wire ropes.

The **Sta-Lok** System is a simple mechanical method of terminating wire ropes.

The **Sta-Lok** system has proven itself to be the simplest to assemble and most efficient method of terminating wire ropes. The **Sta-Lok** terminal will work under constant loading and variable shock loading. In all situations the **Sta-Lok** terminal has proven to be totally reliable.

Stronger than the wire rope

The **Sta-Lok** terminal produces 100% of the rated breaking load of the wire rope and is approved by Lloyds Register of Shipping Certificate No. YSC QA 108.

Hand fitted instead of machine swaged

The **Sta-Lok** terminal can be fitted on site using very simple hand tools. Exact length accuracy can be achieved without the need for pre-measurement or tedious calculation.

Reusable

Manufactured from polished 316 stainless steel grade 1.4401. All **Sta-Lok** terminals are reusable*. They require no servicing and provide long life and very low maintenance costs.

**A new wedge component must be used.*

Sta-Lok Eye, Fork and Stud ends

Provide standard end fittings for wire rope and are designed to suit most chain plates, turnbuckles and fixing points.

Sizes 3-26mm are listed, larger sizes are available upon request.

Sta-Lok Connector

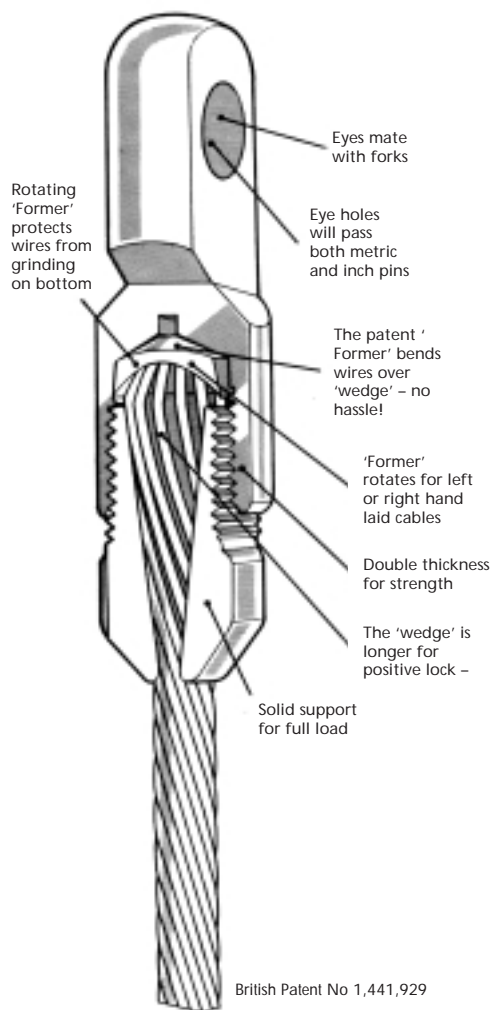
A double ended terminal designed to join two pieces of wire together provides an effective way of repairing stays and shrouds without replacing metres of stainless steel wire rope.

For wire sizes 4-12mm

Sta-Lok Long Terminal

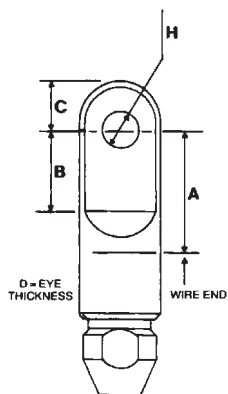
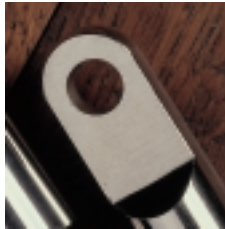
The clever design of the long terminals enables the replacement of damaged swage terminals without having to replace the wire rope.

For wire sizes 4-12mm.



- STA-LOK EYE
- STA-LOK FORK
- STA-LOK STUD
- STA-LOK STAY CONNECTOR
- STA-LOK TOGGLE FORK
- STA-LOK LONG TOGGLE FORK
- STA-LOK LONG STUD
- STA-LOK LONG EYE

When ordering, please state clearly if terminals are for use with Dyform wire rope.



STA-LOK EYE

Reference 033

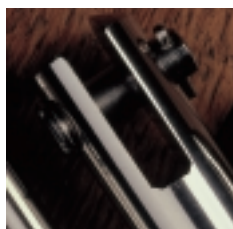
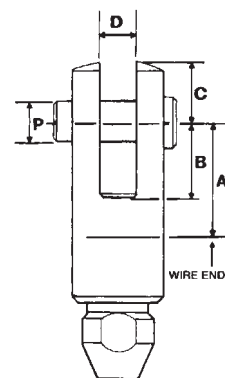
| Cat Ref | Wire Ø mm | A | B | C | D | H |
|----------|-----------|-------|------|------|------|------|
| 033-03 | 3 | 17.9 | 10.0 | 6.3 | 5.0 | 6.5 |
| 033-04 | 4 | 20.3 | 14.7 | 8.0 | 5.8 | 8.0 |
| 033-05 | 5 | 25.9 | 18.0 | 10.5 | 7.5 | 10.0 |
| 033-06 | 6 | 31.0 | 22.2 | 12.7 | 9.4 | 13.0 |
| 033-07 | 7 | 32.5 | 24.6 | 13.6 | 10.4 | 13.0 |
| 033-08-½ | 8 | 35.7 | 27.0 | 14.4 | 12.0 | 13.0 |
| 033-08-¾ | 8 | 35.7 | 27.0 | 15.9 | 13.4 | 16.0 |
| 033-10 | 10 | 41.1 | 29.2 | 17.8 | 13.4 | 16.0 |
| 033-11 | 11 | 42.9 | 33.3 | 22.5 | 19.0 | 19.5 |
| 033-12 | 12 | 42.9 | 33.3 | 22.5 | 19.0 | 19.5 |
| 033-12-¾ | 12 | 42.9 | 33.3 | 23.8 | 19.0 | 22.5 |
| 033-14 | 14 | 55.6 | 38.1 | 25.5 | 20.0 | 22.5 |
| 033-16 | 16 | 63.8 | 40.0 | 27.1 | 20.0 | 22.5 |
| 033-19 | 19 | 68.3 | 49.2 | 36.5 | 27.0 | 28.6 |
| 033-22 | 22 | 122.2 | 60.3 | 39.7 | 33.3 | 34.9 |
| 033-26 | 26 | 128.6 | 60.3 | 42.9 | 33.3 | 34.9 |



STA-LOK FORK

Reference 034

| Cat Ref | Wire Ø mm | A | B | C | D | P |
|---------|-----------|-------|------|------|------|------|
| 034-03 | 3 | 15.5 | 10.0 | 7.8 | 5.4 | 5.0 |
| 034-04 | 4 | 21.1 | 14.7 | 8.9 | 6.3 | 6.3 |
| 034-05 | 5 | 24.4 | 18.0 | 11.4 | 8.0 | 8.0 |
| 034-06 | 6 | 30.2 | 22.2 | 15.8 | 9.6 | 10.9 |
| 034-07 | 7 | 33.9 | 25.1 | 16.0 | 11.1 | 10.9 |
| 034-08 | 8 | 37.0 | 27.4 | 19.2 | 13.7 | 12.5 |
| 034-10 | 10 | 39.7 | 29.4 | 22.6 | 13.7 | 15.6 |
| 034-11 | 11 | 46.0 | 33.3 | 25.5 | 19.4 | 18.5 |
| 034-12 | 12 | 46.0 | 33.3 | 25.5 | 19.4 | 18.5 |
| 034-14 | 14 | 54.0 | 38.1 | 31.5 | 20.4 | 21.5 |
| 034-16 | 16 | 57.5 | 40.0 | 33.6 | 20.4 | 21.5 |
| 034-19 | 19 | 73.8 | 50.0 | 40.8 | 27.8 | 27.0 |
| 034-22 | 22 | 152.4 | 60.3 | 57.1 | 34.9 | 33.0 |
| 034-26 | 26 | 152.4 | 60.3 | 57.1 | 34.9 | 33.0 |



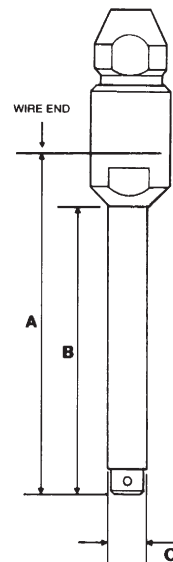


STA-LOK STUD

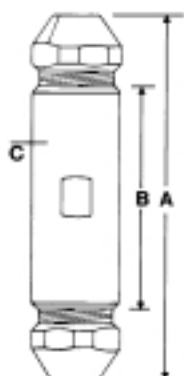
Reference 036-M L = Left Hand Thread
Reference 036-M R = Right Hand Thread

| Cat Ref | Wire Ø mm | A | B | Metric C |
|------------------|-----------|-----|-----|----------|
| 036-03-M6R L/R | 3 | 62 | 52 | M6 |
| 036-04-M6 L/R | 4 | 62 | 52 | M6 |
| 036-04-M8 L/R * | 4 | 64 | 54 | M8 |
| 036-05-M8 L/R | 5 | 65 | 54 | M8 |
| 036-05-M10 L/R * | 5 | 78 | 67 | M10 |
| 036-06-M10 L/R | 6 | 84 | 67 | M10 |
| 036-06-M12 L/R * | 6 | 93 | 83 | M12 |
| 036-07-M12 L/R | 7 | 97 | 83 | M12 |
| 036-07-M14 L/R * | 7 | 97 | 83 | M14 |
| 036-08-M12 L/R * | 8 | 98 | 83 | M12 |
| 036-08-M16 L/R * | 8 | 110 | 95 | M16 |
| 036-10-M16 L/R | 10 | 111 | 95 | M16 |
| 036-10-M20 L/R * | 10 | 129 | 115 | M20 |
| 036-12-M20 L/R | 12 | 139 | 115 | M20 |
| 036-12-M22 L/R * | 12 | 168 | 139 | M22 |
| 036-14-M22 L/R | 14 | 170 | 139 | M22 |
| 036-14-M24 L/R * | 14 | 172 | 139 | M24 |
| 036-16-M24 L/R | 16 | 172 | 139 | M24 |
| 036-16-M27 L/R * | 16 | 205 | 171 | M27 |
| 036-19-M27 L/R | 19 | 205 | 171 | M27 |
| 036-19-M30 L/R * | 19 | 281 | 228 | M30 |
| 036-22-M30 L/R | 22 | 281 | 228 | M30 |
| 036-26-M36 L/R | 26 | 297 | 232 | M36 |

* Recommended for use with Compacted Strand Wire



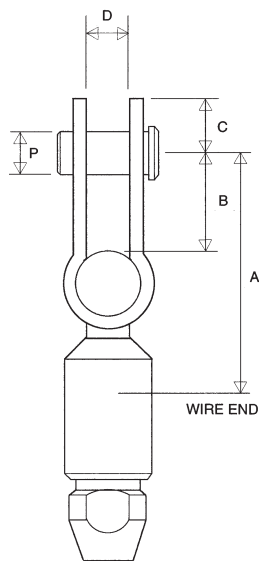
STA-LOK STAY CONNECTOR



Reference 072

| Cat Ref | Wire Ø mm | A | B | C |
|---------|-----------|-------|------|------|
| 072-04 | 4 | 59.5 | 36.5 | 12.7 |
| 072-05 | 5 | 72.2 | 42.8 | 15.9 |
| 072-06 | 6 | 85.7 | 53.9 | 19.0 |
| 072-07 | 7 | 98.4 | 60.3 | 22.2 |
| 072-08 | 8 | 107.1 | 63.5 | 25.4 |
| 072-09 | 9 | 128.6 | 73.0 | 28.6 |
| 072-10 | 10 | 128.6 | 73.0 | 28.6 |
| 072-11 | 11 | 155.6 | 92.1 | 34.9 |
| 072-12 | 12 | 155.6 | 92.1 | 34.9 |





STA-LOK TOGGLE FORK

Reference 050

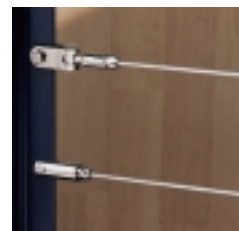
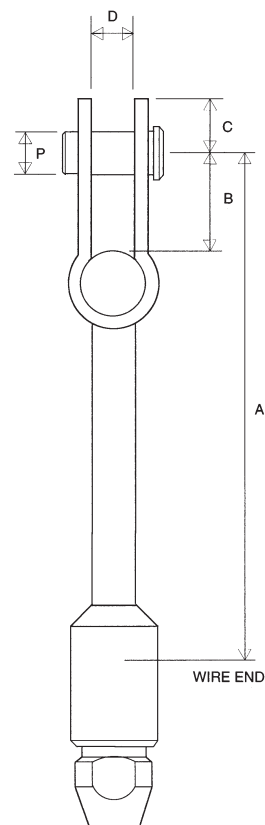
| Cat Ref | Wire Ø mm | A | B | C | D | P |
|-----------------------|-----------|-------|----|----|------|------|
| 050-04 | 4 | 48.0 | 19 | 10 | 8.4 | 7.9 |
| 050-05 | 5 | 56.0 | 21 | 11 | 10.0 | 9.4 |
| 050-06- $\frac{3}{4}$ | 6 | 56.0 | 21 | 11 | 10.0 | 9.4 |
| 050-06 | 6 | 61.0 | 25 | 15 | 11.5 | 10.9 |
| 050-07 | 7 | 70.0 | 28 | 16 | 13.2 | 12.7 |
| 050-08 | 8 | 72.0 | 28 | 16 | 13.2 | 12.7 |
| 050-08- $\frac{3}{4}$ | 8 | 87.0 | 33 | 20 | 16.3 | 15.6 |
| 050-10 | 10 | 87.0 | 33 | 20 | 16.3 | 15.6 |
| 050-10- $\frac{3}{4}$ | 10 | 94.0 | 34 | 25 | 19.4 | 18.5 |
| 050-12 | 12 | 104.0 | 34 | 25 | 19.4 | 18.5 |



STA-LOK LONG TOGGLE FORK

Reference 079

| Cat Ref | Wire Ø mm | A | B | C | D | P |
|-----------------------|-----------|-------|----|----|------|------|
| 079-04 | 4 | 98.5 | 19 | 10 | 8.4 | 7.9 |
| 079-05 | 5 | 120.8 | 21 | 11 | 10.0 | 9.4 |
| 079-06- $\frac{3}{4}$ | 6 | 122.8 | 21 | 11 | 10.0 | 9.4 |
| 079-06 | 6 | 140.2 | 25 | 15 | 11.5 | 10.9 |
| 079-07 | 7 | 148.4 | 28 | 16 | 13.2 | 12.7 |
| 079-08 | 8 | 166.1 | 28 | 16 | 13.2 | 12.7 |
| 079-08- $\frac{3}{4}$ | 8 | 198.8 | 33 | 20 | 16.3 | 15.6 |
| 079-10 | 10 | 213.8 | 33 | 20 | 16.3 | 15.6 |
| 079-10- $\frac{3}{4}$ | 10 | 266.5 | 34 | 25 | 19.4 | 18.5 |
| 079-12 | 12 | 281.5 | 34 | 25 | 19.4 | 18.5 |



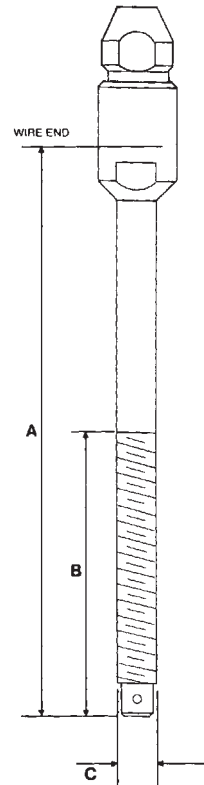
STA-LOK LONG STUD



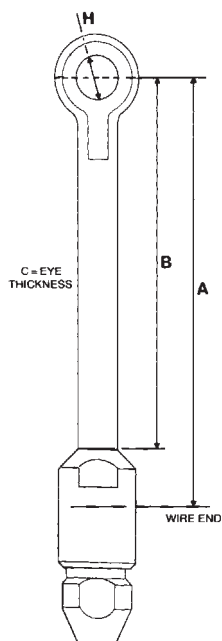
Reference 076-M

| Cat Ref | Wire Ø mm | A | B | Metric C |
|------------|-----------|-------|-------|----------|
| 076-04-M8 | 4 | 141.3 | 54.0 | M8 |
| 076-05-M8 | 5 | 154.0 | 54.0 | M8 |
| 076-05-M10 | 5 | 166.6 | 66.7 | M10 |
| 076-06-M10 | 6 | 180.2 | 66.7 | M10 |
| 076-06-M12 | 6 | 225.4 | 82.6 | M12 |
| 076-07-M12 | 7 | 225.4 | 82.6 | M12 |
| 076-08-M12 | 8 | 225.4 | 82.6 | M12 |
| 076-08-M16 | 8 | 271.4 | 95.3 | M16 |
| 076-10-M16 | 10 | 272.2 | 95.3 | M16 |
| 076-11-M20 | 11 | 339.7 | 115.1 | M20 |
| 076-12-M20 | 12 | 339.7 | 115.1 | M20 |

Right Hand Thread Only

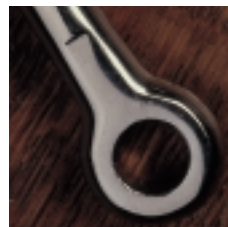


STA-LOK LONG EYE



Reference 078

| Cat Ref | Wire Ø mm | A | B | C | H |
|-----------------------|-----------|-------|-------|------|------|
| 078-05 | 5 | 106.3 | 82.6 | 7.5 | 9.8 |
| 078-06- $\frac{3}{8}$ | 6 | 123.8 | 100.0 | 9.5 | 9.8 |
| 078-06 | 6 | 123.8 | 100.0 | 9.5 | 11.5 |
| 078-06- $\frac{1}{2}$ | 6 | 146.1 | 117.5 | 12.0 | 13.0 |
| 078-07 | 7 | 146.8 | 117.5 | 12.0 | 13.0 |
| 078-08- $\frac{1}{2}$ | 8 | 146.1 | 117.5 | 12.0 | 13.0 |
| 078-08- $\frac{3}{8}$ | 8 | 173.0 | 139.7 | 13.5 | 16.0 |
| 078-10 | 10 | 173.8 | 139.7 | 13.5 | 16.0 |
| 078-11 | 11 | 254.0 | 206.4 | 19.0 | 19.5 |
| 078-12 | 12 | 254.0 | 206.4 | 19.0 | 19.5 |





TURNBUCKLES

4

Sta-Lok offer an extensive range of stainless steel turnbuckles to suit every application.

Manufactured from high quality certificated materials the Sta-Lok range is unparalleled.

Unique design features incorporate style and high performance, for load bearing turnbuckles for structural tensioning cable systems, through to architectural design features and decoration.

Supajust Turnbuckle

Manufactured from solid 316 stainless steel grade 1.4401. Threaded bronze inserts are permanently sealed into each end of the turnbuckle body. The result ensures superb adjustment under high tensioning load without seizing or galling.

The Supajust turnbuckle is currently available in two styles:

Open body Supajust are available with ISO metric threads and UNF threads. For wire sizes 5-26 mm positive locking is achieved with traditional split pins.

Closed body Supajust are available with ISO metric threads and UNF threads for wire sizes 5-26 mm. Locking of the turnbuckle is achieved speedily and effectively with special taper locking nuts.

Sta-Lok Compact

The design of the compact turnbuckle provides the length of adjustment of conventional turnbuckles but is considerably shorter in length (approximately half) and is ideally suited for rigging where space is confined.

For wire sizes 5-16mm.

Sta-Lok ST Turnbuckle

The ST range of turnbuckles provide the ideal closed body stainless steel turnbuckle for 4-5 mm wire sizes.

Sta-Lok Guard Rail Adjuster

The compact design of this fitting is ideal for use on shorter wire lengths where space is confined. Specifically designed for guard rail adjustment and balaustrading.

For wire sizes 4-5 mm.

All Sta-Lok fittings are stronger than the rated breaking strength of the wire rope.

- SUPAJUST FORK & BLANK
- SUPAJUST TOGGLE & BLANK
- SUPAJUST FORK & FORK
- SUPAJUST TOGGLE & FORK
- SUPAJUST TOGGLE & TOGGLE
- SUPAJUST SWAGE & SWAGE
- SUPAJUST FORK & SWAGE
- SUPAJUST FORK & STA-LOK
- SUPAJUST TOGGLE & SWAGE
- SUPAJUST TOGGLE & STA-LOK
- COMPACT TURNBUCKLE
- STAINLESS STEEL TURNBUCKLE

Open Body Style



Closed Body Style



Strap Toggle End

Unique toggle action allows full articulation in two planes.



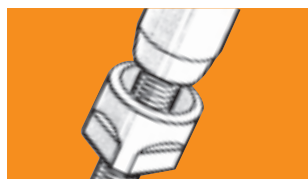
Fork End

Suitable for rigid and static applications.



Threaded Bronze Inserts

Anti-seizing threaded bronze inserts permanently locked in each end ensure superb adjustment without seizing or galling.



Taper Lock Nuts

Taper lock nuts provide a quick and effective anti-vibration lock, eliminating split pins.

FORK & BLANK

Reference S30-M

| Cat Ref | Wire Ø mm | Metric Thread | Fork Width | Pin Dia | Min Break Load KGF |
|---------|-----------|---------------|------------|---------|--------------------|
| S30-M10 | 5 – 6 | M10 | 9.5 | 9.4 | 3199 |
| S30-M12 | 6 – 7 – 8 | M12 | 12.7 | 12.7 | 4668 |
| S30-M16 | 8 – 10 | M16 | 16 | 15.6 | 8822 |
| S30-M20 | 10 – 12 | M20 | 19.1 | 18.5 | 13779 |
| S30-M22 | 14 | M22 | 22.2 | 21.5 | 17229 |
| S30-M24 | 16 | M24 | 25.4 | 25 | 19845 |
| S30-M27 | 19 | M27 | 28.6 | 28.2 | 26131 |
| S30-M30 | 22 | M30 | 32 | 31.6 | 31757 |
| S30-M36 | 26 | M36 | 35 | 34.6 | 46472 |

OPEN
BODY
SUPAJUST
TURNBUCKLE

FORK & BLANK

Reference SC30-M

| Cat Ref | Wire Ø mm | Metric Thread | Fork Width | Pin Dia | Min Break Load KGF |
|----------|-----------|---------------|------------|---------|--------------------|
| SC30-M10 | 5 – 6 | M10 | 9.5 | 9.4 | 3199 |
| SC30-M12 | 6 – 7 – 8 | M12 | 12.7 | 12.7 | 4668 |
| SC30-M16 | 8 – 10 | M16 | 16 | 15.6 | 8822 |
| SC30-M20 | 10 – 12 | M20 | 19.1 | 18.5 | 13779 |
| SC30-M22 | 14 | M22 | 22.2 | 21.5 | 17229 |
| SC30-M24 | 16 | M24 | 25.4 | 25 | 19845 |
| SC30-M27 | 19 | M27 | 28.6 | 28.2 | 26131 |
| SC30-M30 | 22 | M30 | 32 | 31.6 | 31757 |
| SC30-M36 | 26 | M36 | 35 | 34.6 | 46472 |

Supplied with right hand nut

CLOSED
BODY
SUPAJUST
TURNBUCKLE



TOGGLE & BLANK

Reference S20-M

| Cat Ref | Wire Ø mm | Metric Thread | Toggle Width | Pin Dia | Min Break Load KGF |
|---------|-----------|---------------|--------------|---------|--------------------|
| S20-M10 | 5 – 6 | M10 | 9.9 | 9.4 | 3199 |
| S20-M12 | 6 – 7 – 8 | M12 | 13.2 | 12.7 | 4664 |
| S20-M16 | 8 – 10 | M16 | 16.3 | 15.6 | 8822 |
| S20-M20 | 10 – 12 | M20 | 19.4 | 18.5 | 13779 |
| S20-M22 | 14 | M22 | 22.4 | 21.5 | 17229 |

OPEN BODY SUPAJUST TURNBUCKLE

TOGGLE & BLANK

Reference SC20-M

| Cat Ref | Wire Ø mm | Metric Thread | Toggle Width | Pin Dia | Min Break Load KGF |
|----------|-----------|---------------|--------------|---------|--------------------|
| SC20-M10 | 5 – 6 | M10 | 9.9 | 9.4 | 3199 |
| SC20-M12 | 6 – 7 – 8 | M12 | 13.2 | 12.7 | 4664 |
| SC20-M16 | 8 – 10 | M16 | 16.3 | 15.6 | 8822 |
| SC20-M20 | 10 – 12 | M20 | 19.4 | 18.5 | 13779 |
| SC20-M22 | 14 | M22 | 22.4 | 21.5 | 17229 |

Supplied with right hand nut

CLOSED BODY SUPAJUST TURNBUCKLE



FORK & FORK

Reference S31-M

| Cat Ref | Wire Ø mm | Metric Thread | Fully Open | Fully Closed | Fork Width | Pin Dia | Min Break Load KGF |
|---------|-----------|---------------|------------|--------------|------------|---------|--------------------|
| S31-M10 | 5 - 6 | M10 | 298 | 206 | 9.5 | 9.4 | 3199 |
| S31-M12 | 6 - 7 - 8 | M12 | 365 | 273 | 12.7 | 12.7 | 4668 |
| S31-M16 | 8 - 10 | M16 | 432 | 305 | 16 | 15.6 | 8822 |
| S31-M20 | 10 - 12 | M20 | 532 | 380 | 19.1 | 18.5 | 13779 |
| S31-M22 | 14 | M22 | 618 | 440 | 22.2 | 21.5 | 17229 |
| S31-M24 | 16 | M24 | 693 | 490 | 25.4 | 25 | 19845 |
| S31-M27 | 19 | M27 | 851 | 610 | 28.6 | 28.2 | 26131 |
| S31-M30 | 22 | M30 | 1016 | 724 | 32 | 31.6 | 31757 |
| S31-M36 | 26 | M36 | 1310 | 1018 | 35 | 34.6 | 46472 |

OPEN BODY
SUPAJUST
TURNBUCKLE



FORK & FORK

Reference SC31-M

| Cat Ref | Wire Ø mm | Metric Thread | Fully Open | Fully Closed | Fork Width | Pin Dia | Min Break Load KGF |
|----------|-----------|---------------|------------|--------------|------------|---------|--------------------|
| SC31-M10 | 5 - 6 | M10 | 312 | 220 | 9.5 | 9.4 | 3199 |
| SC31-M12 | 6 - 7 - 8 | M12 | 382 | 290 | 12.7 | 12.7 | 4668 |
| SC31-M16 | 8 - 10 | M16 | 472 | 345 | 16 | 15.6 | 8822 |
| SC31-M20 | 10 - 12 | M20 | 545 | 393 | 19.1 | 18.5 | 13779 |
| SC31-M22 | 14 | M22 | 618 | 440 | 22.2 | 21.5 | 17229 |
| SC31-M24 | 16 | M24 | 693 | 490 | 25.4 | 25 | 19845 |
| SC31-M27 | 19 | M27 | 851 | 610 | 28.6 | 28.2 | 26131 |
| SC31-M30 | 22 | M30 | 1016 | 724 | 32 | 31.6 | 31757 |
| SC31-M36 | 26 | M36 | 1310 | 1018 | 35 | 34.6 | 46472 |

CLOSED BODY
SUPAJUST
TURNBUCKLE





TOGGLE & FORK

Reference S21-M

| Cat Ref | Wire Ø mm | Metric Thread | Fully Open | Fully Closed | Fork Width | Pin Dia | Min Break Load KGF |
|---------|-----------|---------------|------------|--------------|------------|---------|--------------------|
| S21-M10 | 5 - 6 | M10 | 314 | 222 | 9.5 | 9.4 | 3199 |
| S21-M12 | 6 - 7 - 8 | M12 | 397 | 280 | 12.7 | 12.7 | 4664 |
| S21-M16 | 8 - 10 | M16 | 454 | 327 | 16 | 15.6 | 8822 |
| S21-M20 | 10 - 12 | M20 | 554 | 402 | 19.1 | 18.5 | 13779 |
| S21-M22 | 14 | M22 | 648 | 470 | 22.2 | 21.5 | 17229 |

OPEN BODY SUPAJUST TURNBUCKLE



TOGGLE & FORK

Reference SC21-M

| Cat Ref | Wire Ø mm | Metric Thread | Fully Open | Fully Closed | Fork Width | Pin Dia | Min Break Load KGF |
|----------|-----------|---------------|------------|--------------|------------|---------|--------------------|
| SC21-M10 | 5 - 6 | M10 | 322 | 230 | 9.5 | 9.4 | 3199 |
| SC21-M12 | 6 - 7 - 8 | M12 | 417 | 300 | 12.7 | 12.7 | 4664 |
| SC21-M16 | 8 - 10 | M16 | 482 | 355 | 16 | 15.6 | 8822 |
| SC21-M20 | 10 - 12 | M20 | 562 | 410 | 19.1 | 18.5 | 13779 |
| SC21-M22 | 14 | M22 | 648 | 470 | 22.2 | 21.5 | 17229 |

CLOSED BODY SUPAJUST TURNBUCKLE





TOGGLE & TOGGLE

Reference S41-M

| Cat Ref | Wire Ø mm | Metric Thread | Fully Open | Fully Closed | Toggle Width | Pin Dia | Min Break Load KGF |
|---------|-----------|---------------|------------|--------------|--------------|---------|--------------------|
| S41-M10 | 5 - 6 | M10 | 327 | 235 | 9.5 | 9.4 | 3199 |
| S41-M12 | 6 - 7 - 8 | M12 | 410 | 293 | 12.7 | 12.7 | 4664 |
| S41-M16 | 8 - 10 | M16 | 474 | 347 | 16 | 15.6 | 8822 |
| S41-M20 | 10 - 12 | M20 | 560 | 408 | 19.1 | 18.5 | 13779 |
| S41-M22 | 14 | M22 | 655 | 477 | 22.2 | 21.5 | 17229 |

OPEN BODY
SUPAJUST
TURNBUCKLE



TOGGLE & TOGGLE

Reference SC41-M

| Cat Ref | Wire Ø mm | Metric Thread | Fully Open | Fully Closed | Toggle Width | Pin Dia | Min Break Load KGF |
|----------|-----------|---------------|------------|--------------|--------------|---------|--------------------|
| SC41-M10 | 5 6 | M10 | 334 | 242 | 9.5 | 9.4 | 3199 |
| SC41-M12 | 6 7 8 | M12 | 431 | 314 | 12.7 | 12.7 | 4664 |
| SC41-M16 | 8 10 | M16 | 493 | 366 | 16 | 15.6 | 8822 |
| SC41-M20 | 10 12 | M20 | 582 | 430 | 19.1 | 18.5 | 13779 |
| SC41-M22 | 14 | M22 | 693 | 515 | 22.2 | 21.5 | 17229 |

CLOSED BODY
SUPAJUST
TURNBUCKLE



SWAGE & SWAGE



Reference S51-M

| Cat Ref | Wire Ø mm | Metric Thread | Fully Open | Fully Closed | Min Break Load KGF |
|--------------|-----------|---------------|------------|--------------|--------------------|
| S51-05-M10 | 5 | M10 | 277 | 185 | 3199 |
| S51-06-M10 | 6 | M10 | 298 | 206 | 3199 |
| S51-06-M12 * | 6 | M12 | 369 | 252 | 4668 |
| S51-07-M12 | 7 | M12 | 369 | 252 | 4668 |
| S51-08-M12 | 8 | M12 | 369 | 252 | 4668 |
| S51-08-M16 * | 8 | M16 | 389 | 262 | 8822 |
| S51-10-M16 | 10 | M16 | 389 | 262 | 8822 |
| S51-10-M20 * | 10 | M20 | 479 | 327 | 13779 |
| S51-12-M20 | 12 | M20 | 479 | 327 | 13779 |
| S51-12-M22 * | 12 | M22 | 536 | 358 | 17229 |
| S51-14-M22 | 14 | M22 | 536 | 358 | 17229 |
| S51-14-M24 * | 14 | M24 | 628 | 425 | 19845 |
| S51-16-M24 | 16 | M24 | 628 | 425 | 19845 |
| S51-16-M27 * | 16 | M27 | 731 | 490 | 26131 |
| S51-19-M27 | 19 | M27 | 731 | 490 | 26131 |

* Recommended for use with Compacted Strand Wire



SWAGE & SWAGE

Reference SC51-M

| Cat Ref | Wire Ø mm | Metric Thread | Fully Open | Fully Closed | Min Break Load KGF |
|---------------|-----------|---------------|------------|--------------|--------------------|
| SC51-05-M10 | 5 | M10 | 285 | 193 | 3199 |
| SC51-06-M10 | 6 | M10 | 307 | 215 | 3199 |
| SC51-06-M12 * | 6 | M12 | 387 | 270 | 4668 |
| SC51-07-M12 | 7 | M12 | 387 | 270 | 4668 |
| SC51-08-M12 | 8 | M12 | 387 | 270 | 4668 |
| SC51-08-M16 * | 8 | M16 | 414 | 287 | 8822 |
| SC51-10-M16 | 10 | M16 | 414 | 287 | 8822 |
| SC51-10-M20 * | 10 | M20 | 479 | 327 | 13779 |
| SC51-12-M20 | 12 | M20 | 487 | 335 | 13779 |
| SC51-12-M22 * | 12 | M22 | 536 | 358 | 17229 |
| SC51-14-M22 | 14 | M22 | 563 | 385 | 17229 |
| SC51-14-M24 * | 14 | M24 | 628 | 425 | 19845 |
| SC51-16-M24 | 16 | M24 | 628 | 425 | 19845 |
| SC51-16-M27 * | 16 | M27 | 731 | 490 | 26131 |
| SC51-19-M27 | 19 | M27 | 731 | 490 | 26131 |

* Recommended for use with Compacted Strand Wire

CLOSED BODY
SUPAJUST
TURNBUCKLE





FORK & SWAGE

Reference S28-M

| Cat Ref | Wire Ø mm | Metric Thread | Fully Open | Fully Closed | Fork Width | Pin Dia | Min Break Load KGF |
|--------------|-----------|---------------|------------|--------------|------------|---------|--------------------|
| S28-05-M10 | 5 | M10 | 288 | 196 | 9.5 | 9.4 | 3199 |
| S28-06-M10 | 6 | M10 | 308 | 216 | 9.5 | 9.4 | 3199 |
| S28-06-M12 * | 6 | M12 | 365 | 248 | 12.7 | 12.7 | 4668 |
| S28-07-M12 | 7 | M12 | 365 | 248 | 12.7 | 12.7 | 4668 |
| S28-08-M12 | 8 | M12 | 377 | 260 | 12.7 | 12.7 | 4668 |
| S28-08-M16 * | 8 | M16 | 408 | 281 | 16.0 | 15.6 | 8822 |
| S28-10-M16 | 10 | M16 | 411 | 284 | 16.0 | 15.6 | 8822 |
| S28-10-M20 * | 10 | M20 | 504 | 352 | 19.1 | 18.5 | 13779 |
| S28-12-M20 | 12 | M20 | 504 | 352 | 19.1 | 18.5 | 13779 |
| S28-12-M22 * | 12 | M22 | 592 | 414 | 22.2 | 21.5 | 17229 |
| S28-14-M22 | 14 | M22 | 592 | 414 | 22.2 | 21.5 | 17229 |
| S28-14-M24 * | 14 | M24 | 663 | 460 | 25.4 | 25.0 | 19845 |
| S28-16-M24 | 16 | M24 | 663 | 460 | 25.4 | 25.0 | 19845 |
| S28-16-M27 * | 16 | M27 | 791 | 550 | 28.6 | 28.2 | 26131 |
| S28-19-M27 | 19 | M27 | 791 | 550 | 28.6 | 28.2 | 26131 |
| S28-19-M30 * | 19 | M30 | 956 | 664 | 32.0 | 31.6 | 31757 |
| S28-22-M30 | 22 | M30 | 956 | 664 | 32.0 | 31.6 | 31757 |
| S28-26-M36 | 26 | M36 | 970 | 678 | 35.0 | 34.6 | 46472 |

* Recommended for use with Compacted Strand Wire



FORK & SWAGE

Reference SC28-M

| Cat Ref | Wire Ø mm | Metric Thread | Fully Open | Fully Closed | Fork Width | Pin Dia | Min Break Load KGF |
|---------------|-----------|---------------|------------|--------------|------------|---------|--------------------|
| SC28-05-M10 | 5 | M10 | 307 | 215 | 9.5 | 9.4 | 3199 |
| SC28-06-M10 | 6 | M10 | 312 | 220 | 9.5 | 9.4 | 3199 |
| SC28-06-M12 * | 6 | M12 | 385 | 268 | 12.7 | 12.7 | 4668 |
| SC28-07-M12 | 7 | M12 | 385 | 268 | 12.7 | 12.7 | 4668 |
| SC28-08-M12 | 8 | M12 | 397 | 280 | 12.7 | 12.7 | 4668 |
| SC28-08-M16 * | 8 | M16 | 454 | 327 | 16.0 | 15.6 | 8822 |
| SC28-10-M16 | 10 | M16 | 457 | 330 | 16.0 | 15.6 | 8822 |
| SC28-10-M20 * | 10 | M20 | 520 | 368 | 19.1 | 18.5 | 13779 |
| SC28-12-M20 | 12 | M20 | 520 | 368 | 19.1 | 18.5 | 13779 |
| SC28-12-M22 * | 12 | M22 | 592 | 414 | 22.2 | 21.5 | 17229 |
| SC28-14-M22 | 14 | M22 | 592 | 414 | 22.2 | 21.5 | 17229 |
| SC28-14-M24 * | 14 | M24 | 663 | 460 | 25.4 | 25.0 | 19845 |
| SC28-16-M24 | 16 | M24 | 663 | 460 | 25.4 | 25.0 | 19845 |
| SC28-16-M27 * | 16 | M27 | 791 | 550 | 28.6 | 28.2 | 26131 |
| SC28-19-M27 | 19 | M27 | 791 | 550 | 28.6 | 28.2 | 26131 |
| SC28-19-M30 * | 19 | M30 | 956 | 664 | 32.0 | 31.6 | 31757 |
| SC28-22-M30 | 22 | M30 | 956 | 664 | 32.0 | 31.6 | 31757 |
| SC28-26-M36 | 26 | M36 | 970 | 678 | 35.0 | 34.6 | 46472 |

* Recommended for use with Compacted Strand Wire



CLOSED BODY
SUPAJUST
TURNBUCKLE



FORK & STA-LOK

Reference S26-M

| Cat Ref | Wire Ø mm | Metric Thread | Fully Open | Fully Closed | Fork Width | Pin Dia | Min Break Load KGF |
|--------------|-----------|---------------|------------|--------------|------------|---------|--------------------|
| S26-05-M10 | 5 | M10 | 284 | 192 | 9.5 | 9.4 | 3119 |
| S26-06-M10 | 6 | M10 | 290 | 198 | 9.5 | 9.4 | 3119 |
| S26-06-M12 * | 6 | M12 | 360 | 243 | 12.7 | 12.7 | 4668 |
| S26-07-M12 | 7 | M12 | 365 | 248 | 12.7 | 12.7 | 4668 |
| S26-08-M12 | 8 | M12 | 365 | 248 | 12.7 | 12.7 | 4668 |
| S26-08-M16 * | 8 | M16 | 402 | 275 | 16.0 | 15.6 | 8822 |
| S26-10-M16 | 10 | M16 | 402 | 275 | 16.0 | 15.6 | 8822 |
| S26-10-M20 * | 10 | M20 | 502 | 350 | 19.1 | 18.5 | 13779 |
| S26-12-M20 | 12 | M20 | 502 | 350 | 19.1 | 18.5 | 13779 |
| S26-12-M22 * | 12 | M22 | 586 | 408 | 22.2 | 21.5 | 17229 |
| S26-14-M22 | 14 | M22 | 586 | 408 | 22.2 | 21.5 | 17229 |
| S26-14-M24 * | 14 | M24 | 658 | 455 | 25.4 | 25.0 | 19845 |
| S26-16-M24 | 16 | M24 | 658 | 455 | 25.4 | 25.0 | 19845 |
| S26-16-M27 * | 16 | M27 | 789 | 548 | 28.6 | 28.2 | 26131 |
| S26-19-M27 | 19 | M27 | 789 | 548 | 28.6 | 28.2 | 26131 |
| S26-19-M30 * | 19 | M30 | 956 | 664 | 32.0 | 31.6 | 31757 |
| S26-22-M30 | 22 | M30 | 956 | 664 | 32.0 | 31.6 | 31757 |
| S26-26-M36 | 26 | M36 | 970 | 678 | 35.0 | 34.6 | 46472 |

* Recommended for use with Compacted Strand Wire

FORK & STA-LOK

Reference SC26-M

| Cat Ref | Wire Ø mm | Metric Thread | Fully Open | Fully Closed | Fork Width | Pin Dia | Min Break Load KGF |
|---------------|-----------|---------------|------------|--------------|------------|---------|--------------------|
| SC26-05-M10 | 5 | M10 | 298 | 206 | 9.5 | 9.4 | 3119 |
| SC26-06-M10 | 6 | M10 | 301 | 209 | 9.5 | 9.4 | 3119 |
| SC26-06-M12 * | 6 | M12 | 382 | 265 | 12.7 | 12.7 | 4668 |
| SC26-07-M12 | 7 | M12 | 385 | 268 | 12.7 | 12.7 | 4668 |
| SC26-08-M12 | 8 | M12 | 385 | 268 | 12.7 | 12.7 | 4668 |
| SC26-08-M16 * | 8 | M16 | 442 | 315 | 16.0 | 15.6 | 8822 |
| SC26-10-M16 | 10 | M16 | 442 | 315 | 16.0 | 15.6 | 8822 |
| SC26-10-M20 * | 10 | M20 | 514 | 362 | 19.1 | 18.5 | 13779 |
| SC26-12-M20 | 12 | M20 | 514 | 362 | 19.1 | 18.5 | 13779 |
| SC26-12-M22 * | 12 | M22 | 586 | 408 | 22.2 | 21.5 | 17229 |
| SC26-14-M22 | 14 | M22 | 586 | 408 | 22.2 | 21.5 | 17229 |
| SC26-14-M24 * | 14 | M24 | 658 | 455 | 25.4 | 25.0 | 19845 |
| SC26-16-M24 | 16 | M24 | 658 | 455 | 25.4 | 25.0 | 19845 |
| SC26-16-M27 * | 16 | M27 | 789 | 548 | 28.6 | 28.2 | 26131 |
| SC26-19-M27 | 19 | M27 | 789 | 548 | 28.6 | 28.2 | 26131 |
| SC26-19-M30 * | 19 | M30 | 956 | 664 | 32.0 | 31.6 | 31757 |
| SC26-22-M30 | 22 | M30 | 956 | 664 | 32.0 | 31.6 | 31757 |
| SC26-26-M36 | 26 | M36 | 970 | 678 | 35.0 | 34.6 | 46472 |

* Recommended for use with Compacted Strand Wire



CLOSED BODY SUPAJUST TURNBUCKLE

TOGGLE & SWAGE

Reference S24-M

| Cat Ref | Wire Ø mm | Metric Thread | Fully Open | Fully Closed | Toggle Width | Pin Dia | Min Break Load KGF |
|--------------|-----------|---------------|------------|--------------|--------------|---------|--------------------|
| S24-05-M10 | 5 | M10 | 302 | 210 | 9.9 | 9.4 | 3199 |
| S24-06-M10 | 6 | M10 | 312 | 220 | 9.9 | 9.4 | 3199 |
| S24-06-M12 * | 6 | M12 | 382 | 265 | 13.2 | 12.7 | 4668 |
| S24-07-M12 | 7 | M12 | 372 | 255 | 13.2 | 12.7 | 4668 |
| S24-08-M12 | 8 | M12 | 382 | 265 | 13.2 | 12.7 | 4668 |
| S24-08-M16 * | 8 | M16 | 433 | 306 | 16.3 | 15.6 | 8822 |
| S24-10-M16 | 10 | M16 | 433 | 306 | 16.3 | 15.6 | 8822 |
| S24-10-M20 * | 10 | M20 | 495 | 368 | 19.4 | 18.5 | 13779 |
| S24-12-M20 | 12 | M20 | 495 | 368 | 19.4 | 18.5 | 13779 |
| S24-12-M22 * | 12 | M22 | 623 | 445 | 22.4 | 21.5 | 17229 |
| S24-14-M22 | 14 | M22 | 623 | 445 | 22.4 | 21.5 | 17229 |

* Recommended for use with Compacted Strand Wire

OPEN BODY
SUPAJUST
TURNBUCKLE

TOGGLE & SWAGE

Reference SC24-M

| Cat Ref | Wire Ø mm | Metric Thread | Fully Open | Fully Closed | Toggle Width | Pin Dia | Min Break Load KGF |
|---------------|-----------|---------------|------------|--------------|--------------|---------|--------------------|
| SC24-05-M10 | 5 | M10 | 312 | 220 | 9.9 | 9.4 | 3199 |
| SC24-06-M10 | 6 | M10 | 322 | 230 | 9.9 | 9.4 | 3199 |
| SC24-06-M12 * | 6 | M12 | 404 | 287 | 13.2 | 12.7 | 4668 |
| SC24-07-M12 | 7 | M12 | 394 | 277 | 13.2 | 12.7 | 4668 |
| SC24-08-M12 | 8 | M12 | 404 | 287 | 13.2 | 12.7 | 4668 |
| SC24-08-M16 * | 8 | M16 | 451 | 324 | 16.3 | 15.6 | 8822 |
| S24-10-M16 | 10 | M16 | 451 | 324 | 16.3 | 15.6 | 8822 |
| SC24-10-M20 * | 10 | M20 | 525 | 373 | 19.4 | 18.5 | 13779 |
| SC24-12-M20 | 12 | M20 | 525 | 373 | 19.4 | 18.5 | 13779 |
| SC24-12-M22 * | 12 | M22 | 623 | 445 | 22.4 | 21.5 | 17229 |
| SC24-14-M22 | 14 | M22 | 623 | 445 | 22.4 | 21.5 | 17229 |

* Recommended for use with Compacted Strand Wire





TOGGLE & STA-LOK

Reference S22-M

| Cat Ref | Wire Ø mm | Metric Thread | Fully Open | Fully Closed | Toggle Width | Pin Dia | Min Break Load KGF |
|--------------|-----------|---------------|------------|--------------|--------------|---------|--------------------|
| S22-05-M10 | 5 | M10 | 297 | 205 | 9.9 | 9.4 | 3199 |
| S22-06-M10 | 6 | M10 | 299 | 207 | 9.9 | 9.4 | 3199 |
| S22-06-M12 * | 6 | M12 | 369 | 252 | 13.2 | 12.7 | 4668 |
| S22-07-M12 | 7 | M12 | 371 | 254 | 13.2 | 12.7 | 4668 |
| S22-08-M12 | 8 | M12 | 377 | 260 | 13.2 | 12.7 | 4668 |
| S22-08-M16 * | 8 | M16 | 424 | 297 | 16.3 | 15.6 | 8822 |
| S22-10-M16 | 10 | M16 | 424 | 297 | 16.3 | 15.6 | 8822 |
| S22-10-M20 * | 10 | M20 | 522 | 370 | 19.4 | 15.6 | 13779 |
| S22-12-M20 | 12 | M20 | 522 | 370 | 19.4 | 18.5 | 13779 |
| S22-12-M22 * | 12 | M22 | 575 | 397 | 22.4 | 21.5 | 17229 |
| S22-14-M22 | 14 | M22 | 575 | 397 | 22.4 | 21.5 | 17229 |

* Recommended for use with Compacted Strand Wire

OPEN BODY SUPAJUST TURNBUCKLE



TOGGLE & STA-LOK

Reference SC22-M

| Cat Ref | Wire Ø mm | Metric Thread | Fully Open | Fully Closed | Toggle Width | Pin Dia | Min Break Load KGF |
|---------------|-----------|---------------|------------|--------------|--------------|---------|--------------------|
| SC22-05-M10 | 5 | M10 | 309 | 217 | 9.9 | 9.4 | 3199 |
| SC22-06-M10 | 6 | M10 | 311 | 219 | 9.9 | 9.4 | 3199 |
| SC22-06-M12 * | 6 | M12 | 389 | 272 | 13.2 | 12.7 | 4668 |
| SC22-07-M12 | 7 | M12 | 391 | 274 | 13.2 | 12.7 | 4668 |
| SC22-08-M12 | 8 | M12 | 393 | 276 | 13.2 | 12.7 | 4668 |
| SC22-08-M16 * | 8 | M16 | 443 | 316 | 16.3 | 15.6 | 8822 |
| SC22-10-M16 | 10 | M16 | 443 | 316 | 16.3 | 15.6 | 8822 |
| SC22-10-M20 * | 10 | M20 | 526 | 374 | 19.4 | 18.6 | 13779 |
| SC22-12-M20 | 12 | M20 | 526 | 374 | 19.4 | 18.5 | 13779 |
| SC22-12-M22 * | 12 | M22 | 588 | 410 | 22.4 | 21.5 | 17229 |
| SC22-14-M22 | 14 | M22 | 588 | 410 | 22.4 | 21.5 | 17229 |

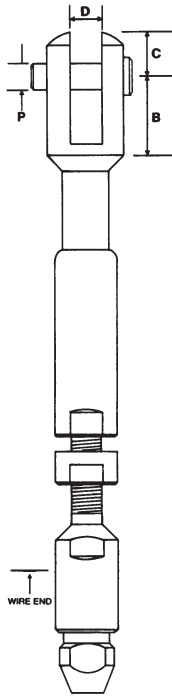
* Recommended for use with Compacted Strand Wire

CLOSED BODY SUPAJUST TURNBUCKLE





FORK & STA-LOK



Reference CT26

| Cat Ref | Wire Ø mm | UNF Thread | Fully Open | Fully Closed | Fork Width | Pin Dia | Min Break Load KGF |
|---------|-----------|------------|------------|--------------|------------|---------|--------------------|
| CT26-05 | 5 | 3/8 | 208 | 125 | 9.5 | 9.4 | 3255 |
| CT26-06 | 6 | 7/16 | 240 | 145 | 11.2 | 10.9 | 4388 |
| CT26-07 | 7 | 1/2 | 285 | 178 | 12.7 | 12.7 | 5970 |
| CT26-08 | 8 | 1/2 | 285 | 178 | 12.7 | 12.7 | 5970 |
| CT26-10 | 10 | 5/8 | 315 | 194 | 16.0 | 15.6 | 9613 |
| CT26-12 | 12 | 3/4 | 376 | 235 | 19.1 | 18.5 | 14061 |
| CT26-14 | 14 | 7/8 | 452 | 281 | 22.2 | 21.5 | 19225 |
| CT26-16 | 16 | 1 | 481 | 290 | 25.4 | 25.0 | 24994 |

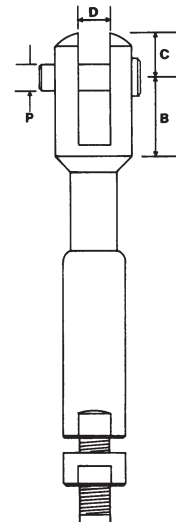


FORK & SWAGE



Reference CT28

| Cat Ref | Wire Ø mm | UNF Thread | Fully Open | Fully Closed | Fork Width | Pin Dia | Min Break Load KGF |
|---------|-----------|------------|------------|--------------|------------|---------|--------------------|
| CT28-05 | 5 | 3/8 | 208 | 125 | 9.5 | 9.4 | 3255 |
| CT28-06 | 6 | 7/16 | 240 | 145 | 11.2 | 10.9 | 4388 |
| CT28-07 | 7 | 1/2 | 285 | 178 | 12.7 | 12.7 | 5970 |
| CT28-08 | 8 | 1/2 | 285 | 178 | 12.7 | 12.7 | 5970 |
| CT28-10 | 10 | 5/8 | 315 | 194 | 16.0 | 15.6 | 9613 |
| CT28-12 | 12 | 3/4 | 376 | 235 | 19.1 | 18.5 | 14061 |
| CT28-14 | 14 | 7/8 | 452 | 281 | 22.2 | 21.5 | 19225 |
| CT28-16 | 16 | 1 | 481 | 290 | 25.4 | 25.0 | 24994 |





FORK & BLANK

Reference ST30-M

| Cat Ref | Wire Ø mm | Metric Thread | Fork Width | Pin Dia | Min Break Load KGF |
|---------|-----------|---------------|------------|---------|--------------------|
| ST30-M8 | 4 – 5 | M8 | 8.0 | 7.9 | 2009 |

FORK & STA-LOK

Reference ST26-M

| Cat Ref | Wire Ø mm | Metric Thread | Fully Open | Fully Closed | Fork Width | Pin Dia | Min Break Load KGF |
|-------------|-----------|---------------|------------|--------------|------------|---------|--------------------|
| ST26-04-M8 | 4 | M8 | 204 | 144 | 8.0 | 7.9 | 2009 |
| ST-26-05-M8 | 5 | M8 | 204 | 144 | 8.0 | 7.9 | 2009 |



FORK & SWAGE

Reference ST28-M

| Cat Ref | Wire Ø mm | Metric Thread | Fully Open | Fully Closed | Fork Width | Pin Dia | Min Break Load KGF |
|------------|-----------|---------------|------------|--------------|------------|---------|--------------------|
| ST28-04-M8 | 4 | M8 | 225 | 158 | 8.0 | 7.9 | 2009 |
| ST28-05-M8 | 5 | M8 | 225 | 158 | 8.0 | 7.9 | 2009 |

FORK & FORK

Reference ST31-M

| Cat Ref | Wire Ø mm | Metric Thread | Fully Open | Fully Closed | Fork Width | Pin Dia | Min Break Load KGF |
|---------|-----------|---------------|------------|--------------|------------|---------|--------------------|
| ST31-M8 | 4 – 5 | M8 | 220 | 160 | 8.0 | 7.9 | 2009 |



TOGGLE & BLANK

Reference ST20-M

| Cat Ref | Wire Ø mm | Metric Thread | Toggle Width | Pin Dia | Min Break Load KGF |
|---------|-----------|---------------|--------------|---------|--------------------|
| ST20-M8 | 4.5 | M8 | 8.4 | 7.9 | 2009 |



TOGGLE & STA-LOK

Reference ST22-M

| Cat Ref | Wire Ø mm | Metric Thread | Fully Open | Fully Closed | Toggle Width | Pin Dia | Min Break Load KGF |
|------------|-----------|---------------|------------|--------------|--------------|---------|--------------------|
| ST22-04-M8 | 4 | M8 | 215 | 163 | 8.4 | 7.9 | 2009 |
| ST22-05-M8 | 5 | M8 | 215 | 163 | 8.4 | 7.9 | 2009 |



TOGGLE & SWAGE

Reference ST24-M

| Cat Ref | Wire Ø mm | Metric Thread | Fully Open | Fully Closed | Toggle Width | Pin Dia | Min Break Load KGF |
|------------|-----------|---------------|------------|--------------|--------------|---------|--------------------|
| ST24-04-M8 | 4 | M8 | 232 | 172 | 8.4 | 7.9 | 2009 |
| ST24-05-M8 | 5 | M8 | 232 | 172 | 8.4 | 7.9 | 2009 |



TOGGLE & FORK

Reference ST21-M

| Cat Ref | Wire Ø mm | Metric Thread | Fully Open | Fully Closed | Fork Width | Pin Dia | Min Break Load KGF |
|---------|-----------|---------------|------------|--------------|------------|---------|--------------------|
| ST21-M8 | 4 - 5 | M8 | 230 | 174 | 8.0 | 7.9 | 2009 |

SWAGE & SWAGE

Reference ST51-M

| Cat Ref | Wire Ø mm | Metric Thread | Fully Open | Fully Closed |
|------------|-----------|---------------|------------|--------------|
| ST51-04-M8 | 4 | M8 | 202 | 150 |
| ST51-05-M8 | 5 | M8 | 202 | 150 |

GUARD RAIL ADJUSTER

FORK & BLANK

Reference G30-M

| Cat Ref | Wire Ø mm | Metric Thread | Fork Width | Pin Dia | Min Break Load KGF |
|---------|-----------|---------------|------------|---------|--------------------|
| G30-M8 | 4 - 5 | M8 | 11.1 | 7.9 | 2009 |

FORK & STA-LOK

Reference G26-M

| Cat Ref | Wire Ø mm | Metric Thread | Fully Open | Fully Closed | Fork Width | Pin Dia | Min Break Load KGF |
|-----------|-----------|---------------|------------|--------------|------------|---------|--------------------|
| G26-04-M8 | 4 | M8 | 144 | 117 | 11.1 | 7.9 | 2009 |
| G26-05-M8 | 5 | M8 | 144 | 117 | 11.1 | 7.9 | 2009 |

FORK & SWAGE

Reference G28-M

| Cat Ref | Wire Ø mm | Metric Thread | Fully Open | Fully Closed | Fork Width | Pin Dia | Min Break Load KGF |
|-----------|-----------|---------------|------------|--------------|------------|---------|--------------------|
| G28-04-M8 | 4 | M8 | 160 | 125 | 11.1 | 7.9 | 2009 |
| G28-05-M8 | 5 | M8 | 160 | 125 | 11.1 | 7.9 | 2009 |

FORK & FORK

Reference G31-M

| Cat Ref | Wire Ø mm | Metric Thread | Fully Open | Fully Closed | Fork Width | Pin Dia | Min Break Load KGF |
|---------|-----------|---------------|------------|--------------|------------|---------|--------------------|
| G31-M8 | 4 - 5 | M8 | 160 | 125 | 11.1 | 7.9 | 2009 |



BRONZE TURNBUCKLES

5

Bronze Turnbuckles

The proven design of the **Sta-Lok** turnbuckle exceeds the breaking loads of today's modern high strength compact strand wire ropes. Forged from high tensile Bronze alloy. The aerodynamic design of this turnbuckle provides one of the strongest most elegant bronze turnbuckles on the world market today.

Finished in highly polished chromium with a variety of stainless steel ends to suit most rigging applications. The **Sta-Lok** forged Bronze turnbuckle has become the first choice for designers and architects worldwide.

Available with Metric and UNF threads for wire sizes 3-12mm.

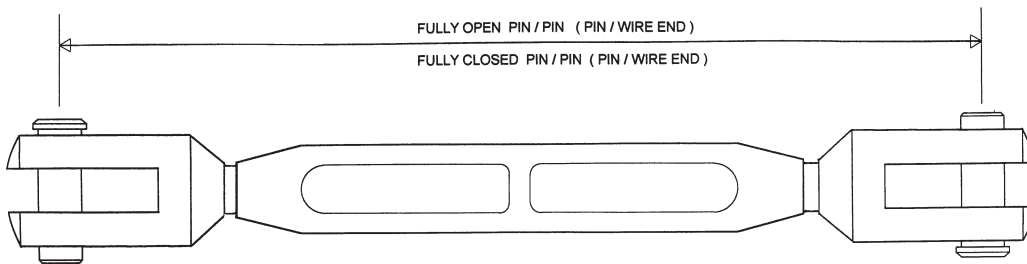
Strap Toggle End

Unique toggle action allows full articulation in two planes.



Fork End

Suitable for rigid and static applications.



- TOGGLE & BLANK
- TOGGLE & FORK
- TOGGLE & TOGGLE
- TOGGLE & STA-LOK
- TOGGLE & SWAGE
- SWAGE & SWAGE
- FORK & BLANK
- FORK & FORK
- FORK & STA-LOK
- FORK & SWAGE
- FORGED BRONZE BODY
- SUPAJUST TURNBUCKLE BODY
- FORK END
- STRAP TOGGLE END
- BAR TOGGLE

TOGGLE & BLANK

Reference B20-M

| Cat Ref | Wire Ø mm | Metric Thread | Toggle Width | Pin Dia | Min Break Load KGF |
|---------|-----------|---------------|--------------|---------|--------------------|
| B20-M6 | 3 – 4 | M6 | 6.4 | 6.2 | 1094 |
| B20-M8 | 4 – 5 | M8 | 8.4 | 7.9 | 2009 |
| B20-M10 | 5 – 6 | M10 | 9.9 | 9.4 | 3199 |
| B20-M12 | 6 – 7 – 8 | M12 | 13.2 | 12.7 | 4664 |
| B20-M16 | 8 – 10 | M16 | 16.3 | 15.6 | 8822 |
| B20-M20 | 10 – 12 | M20 | 19.4 | 18.5 | 13779 |

FORGED FROM HIGH TENSILE BRONZE



TOGGLE & FORK

Reference B21-M

| Cat Ref | Wire Ø mm | Metric Thread | Fully Open | Fully Closed | Fork Width | Pin Dia | Min Break Load KGF |
|---------|-----------|---------------|------------|--------------|------------|---------|--------------------|
| B21-M6 | 3 – 4 | M6 | 238 | 162 | 6.3 | 6.2 | 1094 |
| B21-M8 | 4 – 5 | M8 | 268 | 181 | 8.0 | 7.9 | 2009 |
| B21-M10 | 5 – 6 | M10 | 296 | 204 | 9.5 | 9.4 | 3199 |
| B21-M12 | 6 – 7 – 8 | M12 | 365 | 264 | 12.7 | 12.7 | 4664 |
| B21-M16 | 8 – 10 | M16 | 436 | 311 | 16.0 | 15.6 | 8822 |
| B21-M20 | 10 – 12 | M20 | 567 | 380 | 19.1 | 18.5 | 13779 |





TOGGLE & TOGGLE

Reference B41-M

| Cat Ref | Wire Ø mm | Metric Thread | Fully Open | Fully Closed | Toggle Width | Pin Dia | Min Break Load KGF |
|---------|-----------|---------------|------------|--------------|--------------|---------|--------------------|
| B41-M6 | 3 – 4 | M6 | 248 | 172 | 6.4 | 6.2 | 1094 |
| B41-M8 | 4 – 5 | M8 | 280 | 193 | 8.4 | 7.9 | 2009 |
| B41-M10 | 5 – 6 | M10 | 308 | 216 | 9.9 | 9.4 | 3199 |
| B41-M12 | 6 – 7 – 8 | M12 | 379 | 271 | 13.2 | 12.7 | 4664 |
| B41-M16 | 8 – 10 | M16 | 451 | 324 | 16.3 | 15.6 | 8822 |
| B41-M20 | 10 – 12 | M20 | 586 | 398 | 19.4 | 18.5 | 13779 |

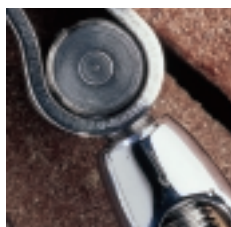
FORGED FROM HIGH TENSILE BRONZE

TOGGLE & STA-LOK

Reference B22-M

| Cat Ref | Wire Ø mm | Metric Thread | Fully Open | Fully Closed | Toggle Width | Pin Dia | Min Break Load KGF |
|--------------|-----------|---------------|------------|--------------|--------------|---------|--------------------|
| B22-03-M6 | 3 | M6 | 234 | 154 | 6.4 | 6.2 | 1094 |
| B22-04-M6 | 4 | M6 | 234 | 154 | 6.4 | 6.2 | 1094 |
| B22-04-M8 * | 4 | M8 | 250 | 170 | 8.4 | 7.9 | 2009 |
| B22-05-M8 | 5 | M8 | 250 | 170 | 8.4 | 7.9 | 2009 |
| B22-05-M10 * | 5 | M10 | 282 | 189 | 9.9 | 9.4 | 3199 |
| B22-06-M10 | 6 | M10 | 284 | 191 | 9.9 | 9.4 | 3199 |
| B22-06-M12 * | 6 | M12 | 340 | 233 | 13.2 | 12.7 | 4668 |
| B22-07-M12 | 7 | M12 | 344 | 237 | 13.2 | 12.7 | 4668 |
| B22-08-M12 | 8 | M12 | 344 | 237 | 13.2 | 12.7 | 4668 |
| B22-08-M16 * | 8 | M16 | 403 | 283 | 16.3 | 15.6 | 8822 |
| B22-10-M16 | 10 | M16 | 403 | 283 | 16.3 | 15.6 | 8822 |
| B22-10-M20 * | 10 | M20 | 520 | 355 | 19.4 | 18.5 | 13779 |
| B22-12-M20 | 12 | M20 | 520 | 355 | 19.4 | 18.5 | 13779 |

* Recommended for use with Compacted Strand Wire



TOGGLE & SWAGE

Reference B24-M

| Cat Ref | Wire Ø mm | Metric Thread | Fully Open | Fully Closed | Toggle Width | Pin Dia | Min Break Load KGF |
|--------------|-----------|---------------|------------|--------------|--------------|---------|--------------------|
| B24-03-M6 | 3 | M6 | 231 | 155 | 6.4 | 6.2 | 1094 |
| B24-04-M6 | 4 | M6 | 246 | 167 | 6.4 | 6.2 | 1094 |
| B24-04-M8 * | 4 | M8 | 266 | 180 | 8.4 | 7.9 | 2009 |
| B24-05-M8 | 5 | M8 | 260 | 174 | 8.4 | 7.9 | 2009 |
| B25-05-M10 * | 5 | M10 | 286 | 194 | 9.9 | 9.4 | 3199 |
| B24-06-M10 | 6 | M10 | 295 | 203 | 9.9 | 9.4 | 3199 |
| B24-06-M12 * | 6 | M12 | 352 | 247 | 13.2 | 12.7 | 4668 |
| B24-07-M12 | 7 | M12 | 344 | 239 | 13.2 | 12.7 | 4668 |
| B24-08-M12 | 8 | M12 | 353 | 248 | 13.2 | 12.7 | 4668 |
| B24-08-M16 * | 8 | M16 | 416 | 289 | 16.3 | 15.6 | 8822 |
| B24-10-M16 | 10 | M16 | 416 | 289 | 16.3 | 15.6 | 8822 |
| B24-10-M20 * | 10 | M20 | 523 | 355 | 19.4 | 18.5 | 13779 |
| B24-12-M20 | 12 | M20 | 523 | 355 | 19.4 | 18.5 | 13779 |

* Recommended for use with Compacted Strand Wire



SWAGE & SWAGE

Reference B51-M

| Cat Ref | Wire Ø mm | Metric Thread | Fully Open | Fully Closed |
|--------------|-----------|---------------|------------|--------------|
| B51-03-M6 | 3 | M6 | 212 | 142 |
| B51-04-M6 | 4 | M6 | 244 | 142 |
| B51-04-M8 * | 4 | M8 | 255 | 167 |
| B51-05-M8 | 5 | M8 | 243 | 155 |
| B51-05-M10 * | 5 | M10 | 263 | 169 |
| B51-06-M10 | 6 | M10 | 281 | 189 |
| B51-06-M12 * | 6 | M12 | 323 | 219 |
| B51-07-M12 | 7 | M12 | 309 | 201 |
| B51-08-M12 | 8 | M12 | 326 | 221 |
| B51-08-M16 * | 8 | M16 | 375 | 251 |
| B51-10-M16 | 10 | M16 | 375 | 251 |
| B51-10-M20 * | 10 | M20 | 474 | 308 |
| B51-12-M20 | 12 | M20 | 474 | 308 |

* Recommended for use with Compacted Strand Wire



FORGED FROM HIGH TENSILE BRONZE



FORK & BLANK

Reference B30-M

| Cat Ref | Wire Ø mm | Metric Thread | Fork Width | Pin Dia | Min Break Load KGF |
|---------|-----------|---------------|------------|---------|--------------------|
| B30-M6 | 3 – 4 | M6 | 6.3 | 6.2 | 1094 |
| B30-M8 | 4 – 5 | M8 | 8.0 | 7.9 | 2009 |
| B30-M10 | 5 – 6 | M10 | 9.5 | 9.4 | 3199 |
| B30-M12 | 6 – 7 – 8 | M12 | 12.7 | 12.7 | 4668 |
| B30-M16 | 8 – 10 | M16 | 16.0 | 15.6 | 8822 |
| B30-M20 | 10 – 12 | M20 | 19.1 | 18.5 | 13779 |

FORGED FROM HIGH TENSILE BRONZE

FORK & FORK

Reference B31-M

| Cat Ref | Wire Ø mm | Metric Thread | Fully Open | Fully Closed | Fork Width | Pin Dia | Min Break Load KGF |
|---------|-----------|---------------|------------|--------------|------------|---------|--------------------|
| B31-M6 | 3 – 4 | M6 | 228 | 150 | 6.3 | 6.2 | 1094 |
| B31-M8 | 4 – 5 | M8 | 254 | 172 | 8.0 | 7.9 | 2009 |
| B31-M10 | 5 – 6 | M10 | 282 | 191 | 9.5 | 9.4 | 3199 |
| B31-M12 | 6 – 7 – 8 | M12 | 355 | 252 | 12.7 | 12.7 | 4668 |
| B31-M16 | 8 – 10 | M16 | 412 | 290 | 16.0 | 15.6 | 8822 |
| B31-M20 | 10 – 12 | M20 | 528 | 361 | 19.1 | 18.5 | 13779 |



FORK & STA-LOK

Reference B26-M

| Cat Ref | Wire Ø mm | Metric Thread | Fully Open | Fully Closed | Fork Width | Pin Dia | Min Break Load KGF |
|--------------|-----------|---------------|------------|--------------|------------|---------|--------------------|
| B26-03-M6 | 3 | M6 | 224 | 144 | 6.3 | 6.2 | 1094 |
| B26-04-M6 | 4 | M6 | 224 | 144 | 6.3 | 6.2 | 1094 |
| B26-04-M8 * | 4 | M8 | 237 | 159 | 8.0 | 7.9 | 2009 |
| B26-05-M8 | 5 | M8 | 236 | 158 | 8.0 | 7.9 | 2009 |
| B26-05-M10 * | 5 | M10 | 267 | 175 | 9.5 | 9.4 | 3119 |
| B26-06-M10 | 6 | M10 | 269 | 177 | 9.5 | 9.4 | 3119 |
| B26-06-M12 * | 6 | M12 | 330 | 223 | 12.7 | 12.7 | 4668 |
| B26-07-M12 | 7 | M12 | 330 | 223 | 12.7 | 12.7 | 4668 |
| B26-08-M12 | 8 | M12 | 330 | 223 | 12.7 | 12.7 | 4668 |
| B26-08-M16 * | 8 | M16 | 384 | 264 | 16.0 | 15.6 | 8822 |
| B26-10-M16 | 10 | M16 | 384 | 264 | 16.0 | 15.6 | 8822 |
| B26-10-M20 * | 10 | M20 | 519 | 332 | 19.1 | 18.5 | 13779 |
| B26-12-M20 | 12 | M20 | 519 | 332 | 19.1 | 18.5 | 13779 |

* Recommended for use with Compacted Strand Wire



FORK & SWAGE

Reference B28-M

| Cat Ref | Wire Ø mm | Metric Thread | Fully Open | Fully Closed | Fork Width | Pin Dia | Min Break Load KGF |
|--------------|-----------|---------------|------------|--------------|------------|---------|--------------------|
| B28-03-M6 | 3 | M6 | 221 | 145 | 6.3 | 6.2 | 1094 |
| B28-04-M6 | 4 | M6 | 236 | 157 | 6.3 | 6.2 | 1094 |
| B28-04-M8 * | 4 | M8 | 254 | 169 | 8.0 | 7.9 | 2009 |
| B28-05-M8 | 5 | M8 | 248 | 164 | 8.0 | 7.9 | 2009 |
| B28-05-M10 | 5 | M10 | 273 | 181 | 9.5 | 9.4 | 3199 |
| B28-06-M10 | 6 | M10 | 282 | 190 | 9.5 | 9.4 | 3199 |
| B28-06-M12 * | 6 | M12 | 335 | 227 | 12.7 | 12.7 | 4668 |
| B28-07-M12 | 7 | M12 | 335 | 227 | 12.7 | 12.7 | 4668 |
| B28-08-M12 | 8 | M12 | 344 | 237 | 12.7 | 12.7 | 4668 |
| B28-08-M16 * | 8 | M16 | 395 | 272 | 16.0 | 15.6 | 8822 |
| B28-10-M16 | 10 | M16 | 395 | 272 | 16.0 | 15.6 | 8822 |
| B28-10-M20 * | 10 | M20 | 500 | 334 | 19.1 | 18.5 | 13779 |
| B28-12-M20 | 12 | M20 | 500 | 334 | 19.1 | 18.5 | 13779 |

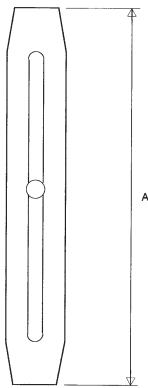
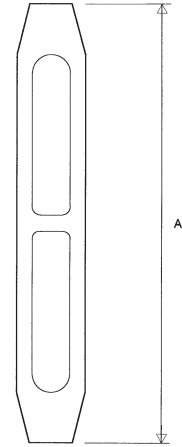
* Recommended for use with Compacted Strand Wire

FORGED FROM HIGH TENSILE BRONZE



FORGED BRONZE BODY

| Reference B19-M | | CHROMIUM PLATED |
|-----------------|---------------|-----------------|
| Cat Ref | Metric Thread | A |
| B19-M6 | M6 | 114 |
| B19-M8 | M8 | 123 |
| B19-M10 | M10 | 133 |
| B19-M12 | M12 | 163 |
| B19-M16 | M16 | 200 |
| B19-M20 | M20 | 255 |



SUPAJUST TURNBUCKLE BODY

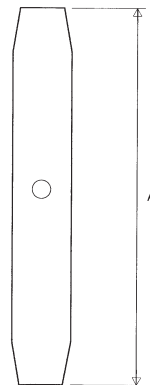
| Reference S19-M | | OPEN BODY STYLE |
|-----------------|---------------|-----------------|
| Cat Ref | Metric Thread | A |
| S19-M10 | M10 | 148 |
| S19-M12 | M12 | 182 |
| S19-M16 | M16 | 210 |
| S19-M20 | M20 | 248 |
| S19-M22 | M22 | 280 |
| S19-M24 | M24 | 315 |
| S19-M27 | M27 | 365 |

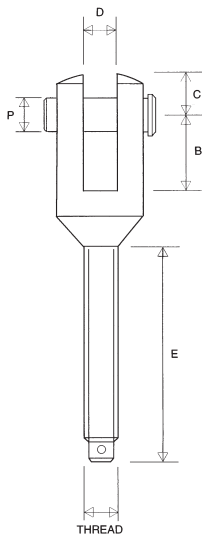


SUPAJUST TURNBUCKLE BODY

| Reference SC19-M | | CLOSED BODY STYLE |
|------------------|---------------|-------------------|
| Cat Ref | Metric Thread | A |
| SC19-M10 | M10 | 148 |
| SC19-M12 | M12 | 182 |
| SC19-M16 | M16 | 210 |
| SC19-M20 | M20 | 248 |
| SC19-M22 | M22 | 280 |
| SC19-M24 | M24 | 315 |
| SC19-M27 | M27 | 365 |

Supplied with Lock Nuts





FORK END

Reference B16 = Left Hand Thread
Reference B17 = Right Hand Thread

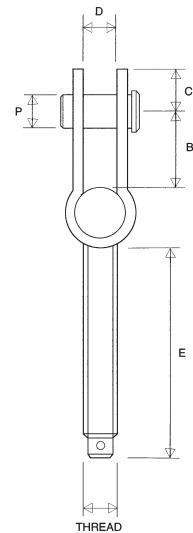
| Cat Ref | Metric Thread | B | C | D | P | E |
|------------|---------------|------|------|------|------|-----|
| B16/17-M6 | M6 | 8.5 | 10.0 | 6.3 | 6.2 | 54 |
| B16/17-M8 | M8 | 14.7 | 10.3 | 7.9 | 7.9 | 59 |
| B16/17-M10 | M10 | 17.5 | 11.9 | 9.5 | 9.4 | 67 |
| B16/17-M12 | M12 | 27.4 | 19.0 | 12.7 | 12.7 | 83 |
| B16/17-M16 | M16 | 29.4 | 22.6 | 16.0 | 15.6 | 95 |
| B16/17-M20 | M20 | 33.3 | 25.6 | 19.1 | 18.5 | 124 |
| B16/17-M22 | M22 | 38.1 | 31.7 | 22.2 | 21.5 | 147 |
| B16/17-M24 | M24 | 40.0 | 35.3 | 25.4 | 25.0 | 165 |
| B16/17-M27 | M27 | 50.0 | 41.3 | 28.5 | 28.2 | 190 |



STRAP TOGGLE END

Reference B15 = Left Hand Thread
Reference B18 = Right Hand Thread

| Cat Ref | Metric Thread | B | C | D | P | E |
|------------|---------------|------|------|------|------|-----|
| B15/18-M6 | M6 | 15.0 | 9.0 | 6.4 | 6.2 | 57 |
| B15/18-M8 | M8 | 19.0 | 10.0 | 8.4 | 7.9 | 60 |
| B15/18-M10 | M10 | 21.0 | 11.0 | 9.9 | 9.4 | 70 |
| B15/18-M12 | M12 | 28.0 | 16.0 | 13.2 | 12.7 | 81 |
| B15/18-M16 | M16 | 33.0 | 20.0 | 16.3 | 15.6 | 89 |
| B15/18-M20 | M20 | 34.0 | 25.0 | 19.4 | 18.5 | 125 |
| B15/18-M22 | M22 | 40.0 | 32.0 | 22.4 | 21.5 | 148 |

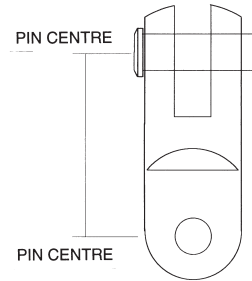




BAR TOGGLE

Reference BT

| Cat Ref | Pin Centre Pin Centre | Fork Width | Pin Dia |
|---------|-----------------------|------------|---------|
| 14BT | 28 | 6.3 | 6.2 |
| 516BT | 38 | 7.9 | 7.9 |
| 38BT | 44 | 9.5 | 9.4 |
| 716BT | 58 | 11.2 | 10.9 |
| 12BT | 68 | 12.7 | 12.7 |
| 58BT | 70 | 16.0 | 15.6 |
| 34BT | 82 | 19.1 | 18.5 |
| 78BT | 103 | 22.2 | 21.5 |
| 100BT | 111 | 25.4 | 25.0 |
| 118BT | 130 | 28.5 | 28.2 |
| 114BT | 154 | 32.0 | 31.6 |
| 138BT | 154 | 35.0 | 34.6 |



• ALL STA-LOK PRODUCTS AVAILABLE WITH METRIC OR UNF THREAD





STA-LOK ROD SYSTEMS

6

Sta-Lok rod systems offer the ultimate in rigging design. In application the **Sta-Lok** rod system is highly effective for architectural rigging. Providing a high quality, low maintenance alternative to wire rigging systems.

Manufactured from the highest specification materials, **Sta-Lok** offer a comprehensive range of stainless steel rods and fittings.

Standard Capacity

Benefiting from many years' experience **Sta-Lok** have developed a Standard Capacity Range of products to meet most strength requirements. This range is manufactured from 316 stainless steel grade 1.4401. Fork and Eye ends are available in two finish specifications, satin and polished.

High Capacity

Understanding the needs for high strength rod systems, **Sta-Lok** have developed a high capacity range of products. Manufactured from high tensile stainless steel alloy, the high capacity range is designed and tailored to meet client's individual requirements. Made to order.

Stainless Steel Rods Standard Capacity

Manufactured from 316 stainless steel grade 1.4401 are available in diameters to suit ISO metric threads M6 – M27 and UNF threads 1/4" – 1".

Minimum breaking loads for 316 stainless steel rods are based on the core diameter of the thread. Stainless steel rods are available up to three metres in length. For spans greater than three metres, a rod connector reference RC is required.

Sta-Lok Tension Forks

Standard Capacity

Are available with left and right hand ISO metric and UNF threads. Used in conjunction with each other they provide the most symmetrical design and most economical method of tensioning rod-rigging systems. Standard capacity tension forks are available in sizes to suit ISO metric threads M6 – M27 and UNF threads 1/4" – 1". Larger sizes are available made to order.

Sta-Lok tension forks can also be used with independent stud terminals for use with wire ropes. See page 14 for further details.

Sta-Lok Fixed Forks

Standard Capacity

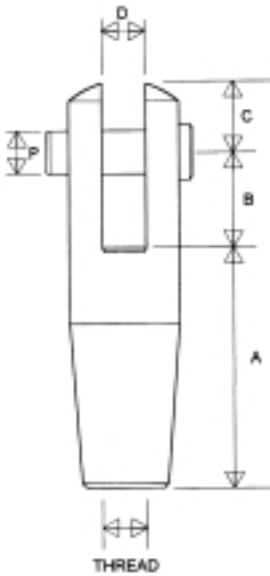
Available with right hand ISO metric and UNF threads. Designed for fixed length spans, or where adjustment is provided by a turnbuckle. Sizes to suit ISO metric threads M6 – M27 and UNF threads 1/4" – 1".

Sta-Lok Rod Connectors

Standard Capacity

Are required for rod spans greater than three metres in length. Designed to develop the full load of the rods, the rod connector is threaded left hand one end, right hand the other end to ensure that the rod assembly remains secure during tensioning. Sizes to suit ISO metric M6 – M27 and UNF threads 1/4" – 1".

- STA-LOK TENSION FORK
- STA-LOK FIXED FORK END
- STA-LOK ROD CONNECTOR
- STA-LOK DOUBLE HEADED PIN
- STA-LOK ISOLATION SLEEVE
- STA-LOK ISOLATION WASHER
- STA-LOK HEXAGONAL NUT
- STA-LOK FLAT NUT
- STA-LOK CONICAL NUT
- STA-LOK DOME NUT
- STA-LOK STAINLESS STEEL WASHER
- STA-LOK ALL THREAD STUDDING



STA-LOK TENSION FORK

Reference F34-M L = Left Hand Metric Thread

Reference F34-M R = Right Hand Metric Thread

| Cat Ref | Rod Ø mm | Metric Thread | A | B | C | D | P | Min Break Load KN |
|--------------|----------|---------------|-------|------|------|------|------|-------------------|
| F34-M6 L/R | 6.4 | M6 | 38.5 | 10.0 | 8.5 | 6.4 | 6.3 | 15.1 |
| F34-M8 L/R | 8.0 | M8 | 52.7 | 14.7 | 10.3 | 8.0 | 7.9 | 21.3 |
| F34-5M10 L/R | 10.0 | M10 | 57.6 | 18.0 | 11.4 | 9.5 | 9.4 | 41.4 |
| F34-6M10 L/R | 10.0 | M10 | 66.2 | 22.2 | 15.7 | 11.1 | 10.9 | 50.7 |
| F34-6M12 L/R | 12.7 | M12 | 66.2 | 22.2 | 15.7 | 11.1 | 10.9 | 50.7 |
| F34-8M12 L/R | 12.7 | M12 | 68.4 | 27.4 | 19.0 | 12.7 | 12.7 | 101.2 |
| F34-M16 L/R | 16.0 | M16 | 86.9 | 29.4 | 22.6 | 16.0 | 15.6 | 131.1 |
| F34-M20 L/R | 20.0 | M20 | 107.0 | 33.3 | 25.5 | 19.1 | 18.5 | 164.8 |
| F34-M22 L/R | 22.2 | M22 | 114.3 | 38.1 | 31.5 | 22.2 | 21.5 | 202.3 |
| F34-M24 L/R | 25.4 | M24 | 129.7 | 40.0 | 35.4 | 25.4 | 25.0 | 243.6 |
| F34-M27 L/R | 28.6 | M27 | 136.5 | 50.0 | 41.2 | 28.5 | 28.2 | 288.8 |

Reference F34-L = Left Hand UNF Thread

Reference F34-R = Right Hand UNF Thread

| Cat Ref | Rod Ø inch | UNF Thread | A | B | C | D | P | Min Break Load KN |
|------------|------------|------------|-------|------|------|------|------|-------------------|
| F34-03 L/R | 1/4 | 1/4 | 38.5 | 10.0 | 8.5 | 6.4 | 6.3 | 15.1 |
| F34-04 L/R | 5/16 | 5/16 | 52.7 | 14.7 | 10.3 | 8.0 | 7.9 | 21.3 |
| F34-05 L/R | 3/8 | 3/8 | 57.6 | 18.0 | 11.4 | 9.5 | 9.4 | 41.4 |
| F34-06 L/R | 7/16 | 7/16 | 66.2 | 22.2 | 15.7 | 11.1 | 10.9 | 50.7 |
| F34-08 L/R | 1/2 | 1/2 | 68.4 | 27.4 | 19.0 | 12.7 | 12.7 | 101.2 |
| F34-10 L/R | 5/8 | 5/8 | 86.9 | 29.4 | 22.6 | 16.0 | 15.6 | 131.1 |
| F34-12 L/R | 3/4 | 3/4 | 107.0 | 33.3 | 25.5 | 19.1 | 18.5 | 164.8 |
| F34-14 L/R | 7/8 | 7/8 | 114.3 | 38.1 | 31.5 | 22.2 | 21.5 | 202.3 |
| F34-16 L/R | 1 | 1 | 129.7 | 40.0 | 35.4 | 25.4 | 25.0 | 243.6 |

Sta-Lok Tension Forks are available in satin or polished finish

STANDARD
CAPACITY
ROD SYSTEMS



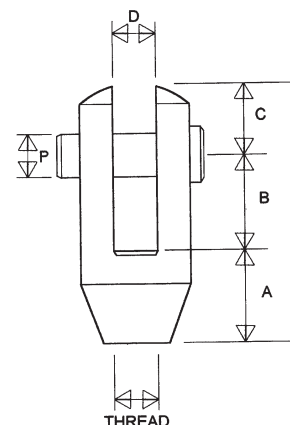


STA-LOK FIXED FORK END

Reference F24-M - Metric Thread

| Cat Ref | Rod Ø mm | Metric Thread | A | B | C | D | P | Min Break Load KN |
|----------|----------|---------------|------|------|------|------|------|-------------------|
| F24-M6 | 6.4 | M6 | 13.5 | 10.0 | 8.5 | 6.4 | 6.3 | 15.1 |
| F24-M8 | 8.0 | M8 | 15.9 | 14.7 | 10.3 | 8.0 | 7.9 | 21.3 |
| F24-5M10 | 10.0 | M10 | 19.1 | 18.0 | 11.4 | 9.5 | 9.4 | 41.4 |
| F24-6M10 | 10.0 | M10 | 22.2 | 22.2 | 15.7 | 11.1 | 10.9 | 50.7 |
| F24-6M12 | 12.7 | M12 | 22.2 | 22.2 | 15.7 | 11.1 | 10.9 | 50.7 |
| F24-8M12 | 12.7 | M12 | 23.8 | 27.4 | 19.0 | 12.7 | 12.7 | 101.2 |
| F24-M16 | 16.0 | M16 | 33.4 | 29.4 | 22.6 | 16.0 | 15.6 | 131.1 |
| F24-M20 | 20.0 | M20 | 38.1 | 33.3 | 25.5 | 19.1 | 18.5 | 164.8 |
| F24-M22 | 22.2 | M22 | 42.9 | 38.1 | 31.5 | 22.2 | 21.5 | 202.3 |
| F24-M24 | 25.4 | M24 | 55.6 | 40.0 | 35.4 | 25.4 | 25.0 | 243.6 |
| F24-M27 | 28.6 | M27 | 63.5 | 50.0 | 41.2 | 28.5 | 28.2 | 288.8 |

Right Hand Thread Only



Reference F24 - UNF Thread

| Cat Ref | Rod Ø inch | UNF Thread | A | B | C | D | P | Min Break Load KN |
|---------|------------|------------|------|------|------|------|------|-------------------|
| F24-03 | 1/4 | 1/4 | 13.5 | 10.0 | 8.5 | 6.4 | 6.3 | 15.1 |
| F24-04 | 5/16 | 5/16 | 15.9 | 14.7 | 10.3 | 8.0 | 7.9 | 21.3 |
| F24-05 | 3/8 | 3/8 | 19.1 | 18.0 | 11.4 | 9.5 | 9.4 | 41.4 |
| F24-06 | 7/16 | 7/16 | 22.2 | 22.2 | 15.7 | 11.1 | 10.9 | 50.7 |
| F24-08 | 1/2 | 1/2 | 23.8 | 27.4 | 19.0 | 12.7 | 12.7 | 101.2 |
| F24-10 | 5/8 | 5/8 | 31.8 | 29.4 | 22.6 | 16.0 | 15.6 | 131.1 |
| F24-12 | 3/4 | 3/4 | 38.1 | 33.3 | 25.5 | 19.1 | 18.5 | 164.8 |
| F24-14 | 7/8 | 7/8 | 42.9 | 38.1 | 31.5 | 22.2 | 21.5 | 202.3 |
| F24-16 | 1 | 1 | 55.6 | 40.0 | 35.4 | 25.4 | 25.0 | 243.6 |

Right Hand Thread Only

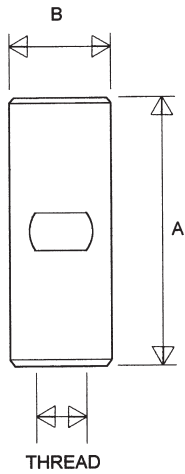
Sta-Lok Fixed Fork Ends are available in satin or polished finish

STANDARD CAPACITY ROD SYSTEMS

Standard Capacity Rod

| Metric | | | | Imperial | | | |
|------------|-------------------|------------------|----------------------|--------------|------------|------------------|----------------------|
| Bar Dia mm | Thread ISO Metric | Breaking Load KN | Proof Stress 0.2% KN | Bar Dia inch | Thread UNF | Breaking Load KN | Proof Stress 0.2% KN |
| 6.4 | M6 | 11.8 | 6.2 | 1/4 | 1/4 | 14.3 | 7.5 |
| 8 | M8 | 21.8 | 11.5 | 5/16 | 5/16 | 22.9 | 12.1 |
| 10 | M10 | 34.7 | 18.3 | 3/8 | 3/8 | 35.3 | 18.6 |
| 12.7 | M12 | 50.6 | 26.7 | 7/16 | 7/16 | 47.6 | 25.1 |
| 16 | M16 | 95.7 | 50.4 | 1/2 | 1/2 | 64.8 | 34.1 |
| 20 | M20 | 135.0 | 78.8 | 5/8 | 5/8 | 104.3 | 54.9 |
| 22.2 | M22 | 168.9 | 98.5 | 3/4 | 3/4 | 137.8 | 80.4 |
| 25.4 | M24 | 194.5 | 113.5 | 7/8 | 7/8 | 188.4 | 109.9 |
| 28.7 | M27 | 256.2 | 149.4 | 1 | 1 | 245.0 | 142.9 |

Minimum breaking loads for 316 stainless steel rods are based on the core diameter of the thread. Stainless steel rods are available up to 3 metres in length. For spans greater than 3 metres, a rod connector, reference RC is required.



STA-LOK ROD CONNECTOR

Reference RC-M Metric Thread

| Cat Ref | Metric Thread | A | B |
|---------|---------------|-------|------|
| RC-M6 | M6 | 30.2 | 9.5 |
| RC-M8 | M8 | 34.9 | 11.2 |
| RC-M10 | M10 | 41.3 | 14.3 |
| RC-M12 | M12 | 55.6 | 19.1 |
| RC-M16 | M16 | 66.7 | 22.2 |
| RC-M20 | M20 | 79.4 | 28.6 |
| RC-M22 | M22 | 92.1 | 31.8 |
| RC-M24 | M24 | 104.7 | 34.9 |
| RC-M27 | M27 | 114.3 | 38.1 |

Threaded left hand one end, right hand other end



Reference RC - UNF Thread

| Cat Ref | UNF Thread | A | B |
|---------|------------|-------|------|
| RC-14 | ¼ | 30.2 | 9.5 |
| RC-516 | ⅜ | 34.9 | 11.2 |
| RC-38 | ½ | 41.3 | 14.3 |
| RC-716 | ⅞ | 49.2 | 17.5 |
| RC-12 | 1 | 55.6 | 19.1 |
| RC-58 | 1 ¼ | 66.7 | 22.2 |
| RC-34 | 1 ½ | 79.4 | 28.6 |
| RC-78 | 1 ¾ | 92.1 | 31.8 |
| RC-100 | 2 | 104.7 | 34.9 |

STANDARD
CAPACITY ROD SYSTEMS

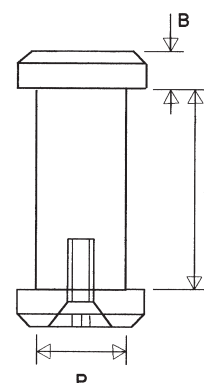




DOUBLE HEADED PIN

Reference D37

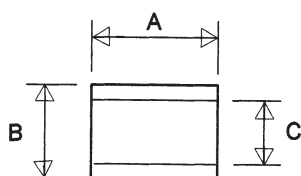
| Cat Ref | A | B | P |
|---------|------|-----|------|
| D37-06 | 14.3 | 1.6 | 6.3 |
| D37-08 | 17.5 | 2.4 | 7.9 |
| D37-10 | 22.2 | 2.4 | 9.4 |
| D37-11 | 25.4 | 2.4 | 11.2 |
| D37-12 | 31.8 | 3.1 | 12.7 |
| D37-16 | 38.1 | 3.1 | 15.6 |
| D37-20 | 44.5 | 3.1 | 18.5 |
| D37-22 | 50.8 | 3.1 | 21.5 |
| D37-24 | 57.2 | 3.1 | 25.0 |
| D37-27 | 63.5 | 3.1 | 28.1 |



STANDARD
CAPACITY
ROD SYSTEMS



ISOLATION SLEEVE

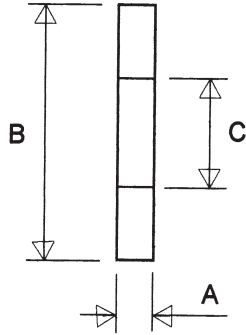


Reference IS

| Cat Ref | A | B | C |
|---------|------|------|------|
| IS-06 | 5.4 | 12.7 | 6.4 |
| IS-08 | 7.0 | 12.7 | 8.0 |
| IS-10 | 8.4 | 16.0 | 9.4 |
| IS-11 | 10.2 | 16.0 | 11.2 |
| IS-12 | 11.7 | 19.0 | 12.7 |
| IS-16 | 15.0 | 22.2 | 16.0 |
| IS-20 | 18.1 | 25.4 | 19.1 |
| IS-22 | 21.2 | 32.0 | 22.2 |
| IS-24 | 24.4 | 35.0 | 25.4 |
| IS-27 | 27.0 | 38.1 | 28.5 |

High Load Bearing NYLON

ISOLATION WASHERS



Reference IW

| Cat Ref | A | B | C |
|---------|-----|----|------|
| IW-06 | 1.5 | 19 | 12.7 |
| IW-08 | 1.5 | 22 | 12.7 |
| IW-10 | 1.5 | 25 | 16.0 |
| IW-11 | 1.5 | 25 | 16.0 |
| IW-12 | 1.5 | 35 | 19.0 |
| IW-16 | 1.5 | 35 | 22.2 |
| IW-20 | 1.5 | 50 | 25.4 |
| IW-22 | 2.0 | 50 | 32.0 |
| IW-24 | 2.0 | 57 | 35.0 |
| IW-27 | 2.0 | 75 | 38.1 |

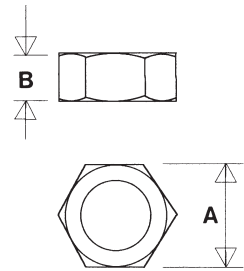
NYLON



HEXAGONAL NUT

Reference HN-M L = Left Hand Thread
Reference HN-M R = Right Hand Thread

| Cat Ref | Metric Thread | A | B |
|------------|---------------|----|------|
| HN-M6 L/R | M6 | 10 | 5.0 |
| HN-M8 L/R | M8 | 10 | 5.0 |
| HN-M10 L/R | M10 | 16 | 8.4 |
| HN-M12 L/R | M12 | 18 | 10.8 |
| HN-M14 L/R | M14 | 24 | 14.8 |
| HN-M16 L/R | M16 | 24 | 14.8 |
| HN-M20 L/R | M20 | 30 | 18.0 |
| HN-M22 L/R | M22 | 36 | 21.5 |
| HN-M24 L/R | M24 | 36 | 21.5 |

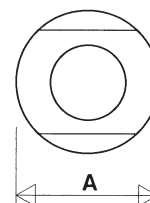
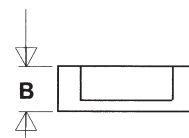




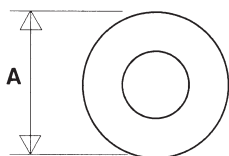
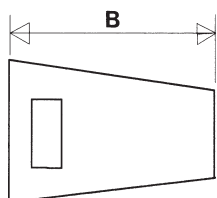
FLAT NUT

Reference N-M L = Left Hand Thread
Reference N-M R = Right Hand Thread

| Cat Ref | Metric Thread | A | B |
|-----------|---------------|----|-----|
| N-M6 L/R | M6 | 11 | 5 |
| N-M8 L/R | M8 | 14 | 6 |
| N-M10 L/R | M10 | 19 | 6.5 |
| N-M12 L/R | M12 | 25 | 8 |
| N-M14 L/R | M14 | 29 | 10 |
| N-M16 L/R | M16 | 29 | 10 |
| N-M20 L/R | M20 | 32 | 11 |
| N-M22 L/R | M22 | 38 | 13 |
| N-M24 L/R | M24 | 44 | 16 |
| N-M27 L/R | M27 | 50 | 16 |



CONICAL NUT



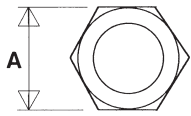
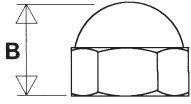
Reference CN-M L = Left Hand Thread
Reference CN-M R = Right Hand Thread

| Cat Ref | Metric Thread | A | B |
|------------|---------------|----|----|
| CN-M6 L/R | M6 | 11 | 22 |
| CN-M8 L/R | M8 | 14 | 25 |
| CN-M10 L/R | M10 | 19 | 29 |
| CN-M12 L/R | M12 | 25 | 36 |
| CN-M16 L/R | M16 | 32 | 41 |
| CN-M20 L/R | M20 | 38 | 41 |
| CN-M22 L/R | M22 | 34 | 60 |
| CN-M24 L/R | M24 | 44 | 70 |
| CN-M27 L/R | M27 | 50 | 85 |

Available in satin or polished finish



DOME NUT



Reference DN-M

| Cat Ref | Metric Thread | A | B |
|---------|---------------|----|----|
| DN-M6 | M6 | 10 | 12 |
| DN-M8 | M8 | 13 | 15 |
| DN-M10 | M10 | 16 | 18 |
| DN-M12 | M12 | 18 | 22 |
| DN-M14 | M14 | 24 | 25 |
| DN-M16 | M16 | 24 | 25 |
| DN-M20 | M20 | 30 | 34 |
| DN-M22 | M22 | 34 | 39 |
| DN-M24 | M24 | 36 | 42 |

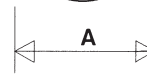
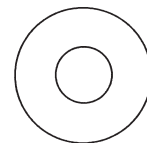
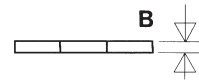
Right Hand Thread Only



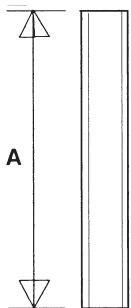
STAINLESS STEEL WASHERS

Reference SW-M

| Cat Ref | Metric Thread | A | B |
|---------|---------------|------|------|
| SW-M6 | M6 | 12.5 | 0.8 |
| SW-M8 | M8 | 17 | 1 |
| SW-M10 | M10 | 21 | 1.25 |
| SW-M12 | M12 | 24 | 1.6 |
| SW-M16 | M16 | 27 | 2 |
| SW-M20 | M20 | 30 | 2 |
| SW-M24 | M24 | 44 | 2.5 |
| SW-M27 | M27 | 50 | 2.5 |



ALL THREAD STUDDING



Reference STD-M

| Cat Ref | Metric Thread | A mm |
|---------|---------------|------|
| STD-M6 | M6 | 1000 |
| STD-M8 | M8 | 1000 |
| STD-M10 | M10 | 1000 |
| STD-M12 | M12 | 1000 |
| STD-M16 | M16 | 1000 |
| STD-M20 | M20 | 1000 |
| STD-M22 | M22 | 1000 |
| STD-M24 | M24 | 1000 |
| STD-M30 | M30 | 1000 |
| STD-M30 | M30 | 1000 |

Right Hand Thread Only



STA-LOK TERMINALS LTD

STANDARD TERMS AND CONDITIONS OF SALE

1. Definitions

In these Terms and Conditions, unless the context otherwise requires:

'The Company' means Sta-Lok Terminals Ltd of Mistley Heath, Manningtree, Essex CO11 2QH;

'The Customer' means the person, firm or company to whom the Company supplies Goods under the Contract;

'The Contract' means the contract entered into between the Company and the Customer in relation to the Goods supplied; and

'The Goods' means the goods which the Company is to supply to the Customer under the Contract.

2. General

2.1 The Company supplies the Goods on these Terms and Conditions only. Accordingly these Terms and Conditions shall apply to all orders for the Goods which are received from the Customer and (save as shall have been expressly agreed in writing by a director of the Company) shall prevail over any conditions of contract which the Customer may seek to impose. No variation of or addition to these Terms and Conditions and no representations about the Goods will be binding on the Company unless made in writing and signed by a director of the Company.

2.2 Any reference in these Terms and Conditions to any provision of an Act of Parliament or statutory instrument shall be construed as a reference to that provision as amended, re-enacted or extended from time to time.

2.3 The headings in these Terms and Conditions are set out for convenience only and shall have no effect on the interpretation of the individual clauses.

3. The Scope of the Contract

3.1 The Contract does not become binding upon the Company until the Company has issued a written acceptance of the Customer's order.

3.2 The Company's obligations under the Contract shall be limited to supplying the Goods contemplated by the Customer's order together with any variations thereof and additions thereto which may subsequently be agreed. The Customer must give the Company reasonable notice of any variations and additions that are required.

4. Price

4.1 Subject as hereinafter provided, the price payable by the Customer for the Goods shall reflect the Company's price list from time to time in force in relation to the Customer except where the Company has issued a written quotation to the Customer, in which case the price or prices referred to in that quotation shall prevail.

4.2 The Company does however reserve the right to increase the price payable in order to reflect any agreed variations or additions to the Customer's requirements and any increases in production costs which may be incurred by the Company between the date of the Customer's order and the date of despatch. In no circumstances shall any increases in the Contract price entitle the Customer to cancel its order or to repudiate the Contract but the Customer shall be entitled to receive notification of any such increases as soon as possible after their occurrence.

4.3 Unless expressly included in any quote given to the Customer, the Company shall be entitled to recover from the Customer as an additional item at cost all transportation, insurance, storage and other associated costs and charges which are incurred by the Company in delivering the Goods in accordance with the Customer's order, including any additional costs and charges which may be incurred by the Company in the event of the Customer for any reason failing or being unable to accept delivery of the Goods when tendered or causing despatch or delivery to be withheld through the non-payment of any sum due to the Company.

4.4 Unless otherwise indicated, all prices listed or quoted are exclusive of any applicable Value Added or other relevant sales taxes, which the Company reserves the right to levy at the prevailing rate on all amounts actually charged to the Customer.

5. Payment

5.1 Payment of sums due under the Contract shall be made by the Customer nett within 30 days of invoice, unless the Company has requested alternative terms of payment in which case payment should be made on the terms then requested. The Company shall be entitled to invoice the Customer for each consignment despatched at any time on or after the date of despatch.

5.2 In the event that payment is not made by the due date, the Company shall be entitled to charge the Customer interest on any overdue amounts at the rate of 2% per month (or at such other rate as may be advised by the Company from time to time) for each month or part month during which the said amounts are to remain overdue (both before and after any judgment).

5.3 Payment on or before the due date is of the essence of the Contract. Accordingly the Company shall upon notice to the Customer be entitled to withhold delivery and/or suspend the performance of the Contract generally if at the time of the notice payment of any amount stated on any of the Company's invoices (whether related to the Contract or not) is then overdue. If the Customer fails within 14 days of notice to settle the amount outstanding under the said invoices, then the Company shall be entitled to terminate the Contract without further notice.

5.4 The Customer shall not be entitled to retain, deduct or defer any sums whatsoever due to the Company under the Contract on account of any dispute cross claim or set off which it might have with the Company or with any company in the same group of companies as the Company

6. Delivery and Performance

6.1 The performance of the Contract is subject to availability, and therefore in the event that it is unable to supply any specific Goods or any specific quantities of Goods, the Company reserves the right to provide suitable alternatives or suitable alternative quantities, and to make such reasonable adjustments (upwards or downwards) to the Contract price as are necessary to reflect the change. Such alterations shall not entitle the Customer to repudiate the Contract.

6.2 Unless otherwise indicated, and subject to the provisions of clause 4.3 above, the Company shall be responsible for arranging delivery of the Goods to the Customer's premises. Accordingly the Customer undertakes to provide a safe and convenient access for the Company's delivery vehicles (or those of its agents) at each delivery point together with safe facilities for the loading and unloading of the Goods (including any assistance in loading and unloading that may be required). The placing of an order by the Customer shall be deemed to constitute authority for the Company's delivery vehicles (or those of its agents) to enter the Customer's premises where necessary and it shall be the responsibility of the Customer to supervise the safe discharge of each load.

6.3 Any time estimates or delivery dates given by the Company shall be by way of guidance only and shall not be of the essence of the Contract. Accordingly any delay in delivery shall not entitle the Customer to repudiate the Contract and the Company shall not be liable to the Customer (either in contract or tort) for any loss or damage whatsoever (including consequential losses, loss of profit and other losses of a similar nature) which may be suffered or sustained by it as a result of any failure by the Company to adhere to any time estimate or delivery date given.

6.4 If for any reason the Company still fails to deliver the Goods within any reasonable time limit specified by the Customer at any time after the Customer has purported to make time of the essence of the Contract, and a Court or any other arbiter subsequently finds the Company to be responsible for any loss or damage suffered by the Customer as a result thereof, the Company's liability therefor (both in contract and tort) shall be strictly limited to the excess (if any) of the cost to the Customer (over and above the Contract price) of obtaining similar goods (in the cheapest available market) to replace those not delivered.

6.5 Without prejudice to any of the above the Company shall be entitled to deliver the Goods by single delivery or instalment at its option and, whenever the Goods are delivered, or are to be delivered, by instalments, the Company shall be entitled to treat each delivery as a separate contract. Accordingly any failure by the Company to make one delivery (in whole or in part) shall not entitle the Customer to terminate any other contract or refuse any other deliveries.

7. Ownership and risk

7.1 Unless otherwise indicated, the risk of damage to the Goods shall pass to the Customer upon delivery to the Customer or its agents.

7.2 However, title to the goods shall not pass to the Customer until the Company has

received payment in full of all sums due from the Customer under the Contract together with any interest accrued thereon and other charges. In the meantime, the Company shall retain full legal and beneficial title to the Goods and the Customer shall (a) hold the Goods in a fiduciary capacity as the Company's bailee free from any charge, lien or other encumbrance, (b) shall keep the Goods fully insured with a reputable insurer, and (c) shall store the Goods separately in such a way that they can be clearly identified as the Company's property. In this period the Company shall be entitled to recover possession of the Goods (or any of them) at any time and for any reason whatsoever and shall be entitled without restriction to lawfully enter upon the premises to the customer for the purpose of removing the Goods. The Customer shall pay all costs and expenses incurred by the Company in exercising this right.

7.3 If, pending the passing of title in the Goods, the Customer sells or otherwise disposes of the Goods in such manner as to pass valid title to a third party, the Customer shall hold the full proceeds of such a sale (and pending payment the right to receive the proceeds of such a sale) on trust for the Company in a separate and identifiable bank account. During the same period, the Customer will pay the said proceeds to the Company on demand notwithstanding that any period of credit extended to the Customer may not have expired. In addition the Customer agrees that it will assign to the Company upon the Company's request all of its rights (under such a contract of sale) against any subsequent purchaser of the Goods.

7.4 Notwithstanding that title may not have passed to the Customer, the Company may maintain an action for the price of the Goods supplied. The Customer acknowledges that nothing in clauses 7.2 and 7.3 above confers any right upon the Customer to return or reject the Goods supplied or to refuse, defer or delay payment for them.

8. Lien

8.1 The Company shall (without prejudice to any other remedy available to it) have in respect of all unpaid debts and other sums due from the Customer under the Contract a general lien on any goods and property whatsoever in its possession (whether in relation to the Contract or otherwise) which are or intended to become the property of the Customer.

8.2 Pursuant to that lien, the Company shall be entitled upon fourteen days written notice to the Customer to sell any goods or property so held upon such terms as it thinks fit, and to keep the proceeds of sale thereof in diminution of the debts, the other sums due and all costs and expenses incurred in or about effecting the sale.

9. Faulty Goods and Goods Damaged in Transit

9.1 Where the Goods are supplied under a consumer transaction as defined by the Consumer Transactions (Restrictions on Statements) Order 1976, the statutory rights of the Customer shall be unaffected by anything set out in these Terms and Conditions.

9.2 Subject to the provisions of clause 9.1 above, the Company will not accept any liability for Goods damaged in transit unless the Customer gives it written notice of the damage within 5 working days of delivery. Nor will the Company accept any liability for any defective or faulty Goods supplied, unless the Customer gives the Company written notice of the defect or defects in question within 90 days of delivery (save where the defect or defects are of a nature which would not normally be apparent upon a reasonable inspection, in which case the notice of defect or defects must be given within 14 days of discovering the same).

9.3 The Company shall not incur any liability whatsoever in relation to any Goods which have been fitted incorrectly or subjected to any incorrect, abnormal or improper use, modification or application, whether by the Customer or any third party. Subject to this however, and to the provisions of clause 9.1 above, the Company will repair or replace all genuinely defective or faulty Goods at its own expense on condition that the defective or faulty Goods are first returned to it for inspection. Without prejudice to the provisions of clause 7.1 above, all goods which are returned to or replaced by the Company, shall become the property of the Company.

9.4 Save for those implied by statute, the Company does not give any conditions or warranties whatsoever about the quality, merchantability, fitness for purpose or description of the Goods. The Company excludes all liability (both in contract and tort) for any consequential losses, losses of profit and other losses of a similar nature which may be suffered or sustained by the Customer in connection with the Contract and/or the quality or performance of the Goods supplied thereunder. In addition, the Company's liability to the Customer (both in contract and tort) in respect of all other financial claims which the Customer may bring against it arising out of the Contract and/or the quality or performance of the Goods supplied thereunder, shall be limited in aggregate to a sum not exceeding £100,000.

9.5 In all cases it shall be the Customer's responsibility to ensure that the Goods are suitable for use and/or resale by it in accordance with its own specialised knowledge and skill and the Customer acknowledges that it has not placed any reliance upon the skill or judgment of the Company or of any of the Company's servants or agents. In the case of export orders, it is also the Customer's responsibility to ensure that the Goods comply with any legislation or regulations relating to their use in the country in question and the Company shall not therefore incur any liability whatsoever in respect thereof.

9.6 Notwithstanding anything hereinbefore contained, the Company is not seeking to exclude or restrict its potential liability for damage in the nature of death or personal injury caused by its negligence or that of its servants, agents or sub-contractors.

10. Cancellation of Orders

Orders for Goods which have been accepted by the Company may not be cancelled or suspended without the Company's prior written consent which consent the Company may give or withhold in its absolute discretion.

11. Invalidation of any Contractual Term

If any clause or sub-clause or part thereof contained in these Terms and Conditions is held by any court or other competent authority to be invalid or unenforceable in whole or in part, the validity of the remainder of the clause or sub-clause and of the remaining clauses and sub-clauses of these Terms and Conditions shall not be affected thereby.

12. Waiver

No waiver by the Company of any particular default or breach of Contract by the Customer shall be considered as a waiver of any subsequent default or breach of the same or of any other provision of the Contract.

13. Assignment

The Customer may not assign the benefit or burden of the Contract without the written consent of the Company which the Company may give or withhold in its absolute discretion.

14. Force majeure

In the event that the normal course of the Contract is frustrated, prevented, interrupted, hindered, delayed or rendered unduly expensive in any way whatsoever through war, rebellion, civil commotion, strike, lock-out or industrial dispute, fire, explosion, earthquake, act of God, flood, drought or bad weather, the unavailability or late delivery of supplies, the inability to secure labour or by any other cause whatsoever beyond the Company's control, the Company shall promptly give notice thereof to the Customer and shall have the right to cancel the Contract or defer its performance for as long as such force majeure shall continue.

15. Proper Law

The construction validity and performance of the Contract shall be governed by English Law and all disputes or questions which may arise out of or in connection with or in relation to the Contract shall be decided by the English Courts.

STA-LOK[®]



Sta-Lok Terminals Limited
Unit 6 Causeway End
Station Road
Lawford
Essex CO11 1AA
Telephone +44(0)1206 391509
Fax +44(0)1206 395286
Email STALOK@AOL.COM